

For Research Use Only

Mouse Pla2g7 Recombinant monoclonal antibody, PBS Only (Capture)

Catalog Number: 86497-3-PBS



Basic Information

Catalog Number:

86497-3-PBS

Concentration:

1 mg/ml

Source:

Rabbit

Isotype:

IgG

Immunogen Catalog Number:

EG2686

GenBank Accession Number:

NM_013737.5

GeneID (NCBI):

27226

UNIPROT ID:

Q60963

Full Name:

phospholipase A2, group VII (platelet-activating factor acetylhydrolase, plasma)

Calculated MW:

49 kDa

Purification Method:

Protein A purification

CloneNo.:

250587D1

Applications

Tested Applications:

Sandwich ELISA, Indirect ELISA

Species Specificity:

mouse

Background Information

Storage

Storage:

Store at -80°C.

The product is shipped with ice packs. Upon receipt, store it immediately at -80°C

Storage Buffer:

PBS only, pH7.3

For technical support and original validation data for this product please contact:

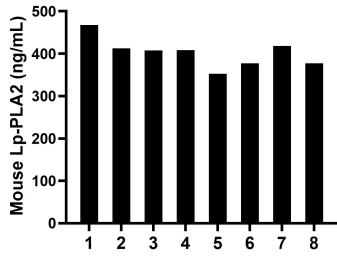
T: 4006900926

E: Proteintech-CN@ptglab.com

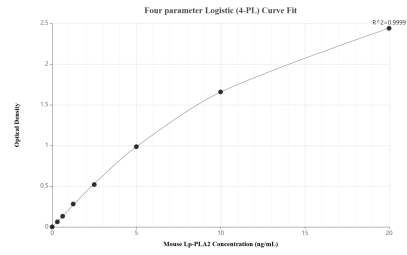
W: ptgcn.com

This product is exclusively available under Proteintech Group brand and is not available to purchase from any other manufacturer.

Selected Validation Data



Serum of eight mice was measured. The Lp-PLA2 concentration of detected samples was determined to be 402.70 ng/mL with a range of 352.59-467.59 ng/mL.



Sandwich ELISA standard curve of MP02685-1, Mouse Lp-PLA2 Recombinant Matched Antibody Pair - PBS only. 86497-3-PBS was coated to a plate as the capture antibody and incubated with serial dilutions of standard Eg2686. 86497-2-PBS was HRP conjugated as the detection antibody. Range: 0.313-20 ng/mL.