

For Research Use Only

# Mouse Pla2g7 Recombinant monoclonal antibody, PBS Only (Detector)

Catalog Number: 86497-2-PBS



## Basic Information

<b>Catalog Number:</b> 86497-2-PBS	<b>GenBank Accession Number:</b> NM_013737.5	<b>Purification Method:</b> Protein A purification
<b>Concentration:</b> 1 mg/ml	<b>GeneID (NCBI):</b> 27226	<b>CloneNo.:</b> 250587C12
<b>Source:</b> Rabbit	<b>UNIPROT ID:</b> Q60963	
<b>Isotype:</b> IgG	<b>Full Name:</b> phospholipase A2, group VII (platelet-activating factor acetylhydrolase, plasma)	
<b>Immunogen Catalog Number:</b> EG2686	<b>Calculated MW:</b> 49 kDa	

## Applications

**Tested Applications:**  
Sandwich ELISA, Indirect ELISA

**Species Specificity:**  
mouse

## Background Information

### Storage

**Storage:**  
Store at -80°C.  
**The product is shipped with ice packs. Upon receipt, store it immediately at -80°C**

**Storage Buffer:**  
PBS only, pH7.3

For technical support and original validation data for this product please contact:

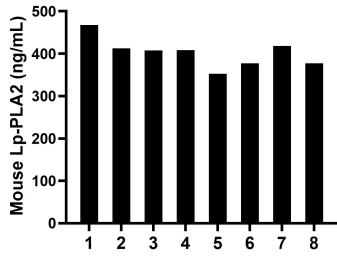
T: 4006900926

E: [Proteintech-CN@ptglab.com](mailto:Proteintech-CN@ptglab.com)

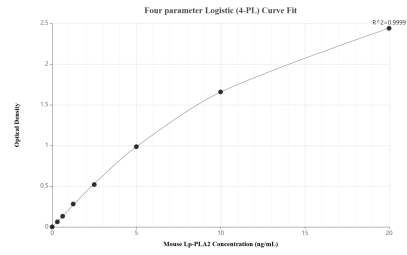
W: [ptgcn.com](http://ptgcn.com)

**This product is exclusively available under Proteintech Group brand and is not available to purchase from any other manufacturer.**

## Selected Validation Data



Serum of eight mice was measured. The Lp-PLA2 concentration of detected samples was determined to be 402.70 ng/mL with a range of 352.59-467.59 ng/mL.



Sandwich ELISA standard curve of MP02685-1, Mouse Lp-PLA2 Recombinant Matched Antibody Pair - PBS only. 86497-3-PBS was coated to a plate as the capture antibody and incubated with serial dilutions of standard Eg2686. 86497-2-PBS was HRP conjugated as the detection antibody. Range: 0.313-20 ng/mL.