

For Research Use Only

MCAM Recombinant monoclonal antibody, PBS Only (Capture)

Catalog Number:86492-5-PBS



Basic Information

| | | |
|--|--|---|
| Catalog Number: 86492-5-PBS | GenBank Accession Number: NM_006500.2 | Purification Method: Protein A purification |
| Source: Rabbit | GeneID (NCBI): 4162 | CloneNo.: 250530B2 |
| Isotype: IgG | UNIPROT ID: P43121-1 | |
| Immunogen Catalog Number: EG2938 | Full Name: melanoma cell adhesion molecule | |
| | Calculated MW: 72 kDa | |

Applications

Tested Applications:
Sandwich ELISA, Indirect ELISA

Species Specificity:
human

Background Information

Storage

Storage:
Store at -80°C.
The product is shipped with ice packs. Upon receipt, store it immediately at -80°C

Storage Buffer:
PBS only, pH7.3

For technical support and original validation data for this product please contact:

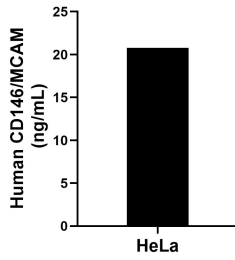
T: 4006900926

E: Proteintech-CN@ptglab.com

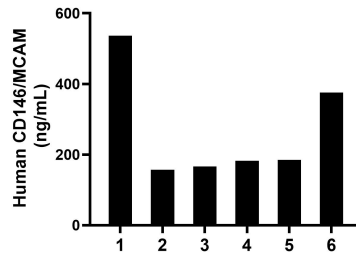
W: ptgcn.com

This product is exclusively available under Proteintech Group brand and is not available to purchase from any other manufacturer.

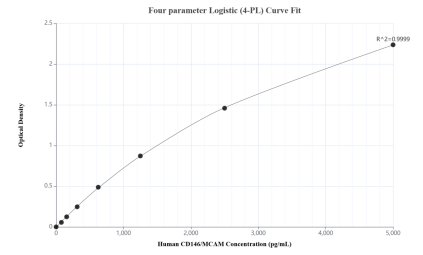
Selected Validation Data



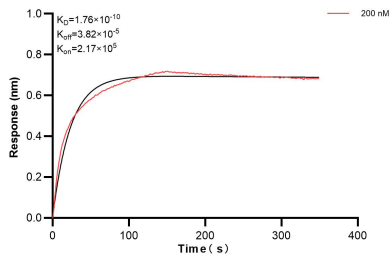
HeLa were cultured in DMEM supplemented with 10% fetal bovine serum, 2.5 mM L-glutamine, 100 U/mL penicillin, and 100 μ g/mL streptomycin sulfate. An aliquot of the cell culture supernate was removed, assayed for human CD146/MCAM, and measured 20.8 ng/mL.



Plasma of six individual healthy human donors was measured. The CD146/MCAM concentration of detected samples was determined to be 267.2 ng/mL with a range of 157.5-536.7 ng/mL.



Sandwich ELISA standard curve of MP02466-2, Human CD146/MCAM Recombinant Matched Antibody Pair - PBS only. 86492-5-PBS was coated to a plate as the capture antibody and incubated with serial dilutions of standard Eg2938. 86492-4-PBS was HRP conjugated as the detection antibody. Range: 78.1-5000 pg/mL.



Biolayer interferometry (BLI) kinetic assay of 86492-5-PBS against Human MCAM was performed. The affinity constant is 0.176 nM.