

For Research Use Only

MCAM Recombinant antibody, PBS Only (Detector)

Catalog Number: 86492-2-PBS



Basic Information

Catalog Number:

86492-2-PBS

Concentration:

1 mg/ml

Source:

Rabbit

Isotype:

IgG

Immunogen Catalog Number:

EG2938

GenBank Accession Number:

NM_006500.2

GeneID (NCBI):

4162

UNIPROT ID:

P43121-1

Full Name:

melanoma cell adhesion molecule

Calculated MW:

72 kDa

Purification Method:

Protein A purification

CloneNo.:

250530A9

Applications

Tested Applications:

Cytometric bead array, Indirect ELISA, Sample test

Species Specificity:

human

Background Information

Storage

Storage:

Store at -80°C.

The product is shipped with ice packs. Upon receipt, store it immediately at -80°C

Storage Buffer:

PBS only, pH7.3

For technical support and original validation data for this product please contact:

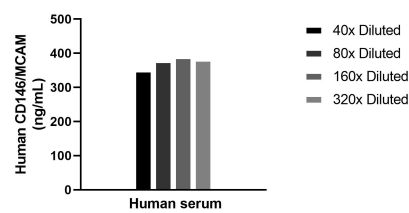
T: 4006900926

E: Proteintech-CN@ptglab.com

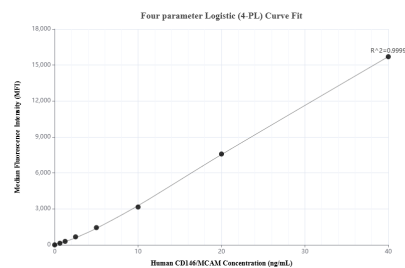
W: ptgcn.com

This product is exclusively available under Proteintech Group brand and is not available to purchase from any other manufacturer.

Selected Validation Data



The mean CD146/MCAM concentration was determined to be 373.4 ng/mL in human serum.



Cytometric bead array standard curve of MP02466-1, CD146/MCAM Recombinant Matched Antibody Pair, PBS Only. Capture antibody: 86492-3-PBS. Detection antibody: 86492-2-PBS. Standard: Eg2938. Range: 0.625-40 ng/mL.