

CD146/MCAM Recombinant monoclonal antibody

Catalog Number: 86492-1-RR

Basic Information

Catalog Number: 86492-1-RR	GenBank Accession Number: NM_006500.2	Purification Method: Protein A purification
Source: Rabbit	GeneID (NCBI): 4162	CloneNo.: 250530B11
Isotype: IgG	UNIPROT ID: P43121-1	Recommended Dilutions: WB: 1:5000-1:50000 IF/ICC: 1:400-1:1600
Immunogen Catalog Number: EG2938	Full Name: melanoma cell adhesion molecule	
	Calculated MW: 72 kDa	
	Observed MW: 120 kDa	

Applications

Tested Applications: WB, IF/ICC, ELISA	Positive Controls:
Species Specificity: human	WB : A375 cells, HeLa cells, HepG2 cells, L02 cells, HUVEC cells IF/ICC : HUVEC cells,

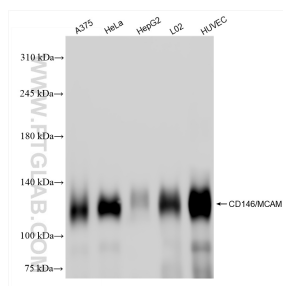
Background Information

CD146, also known as melanoma cell adhesion molecule (MCAM) or MUC18, originally identified as a biomarker of melanoma progression, is a transmembrane glycoprotein of 113-130 kDa, belonging to the immunoglobulin (Ig) superfamily (PMID: 8378324; 25993332). Structurally, it consists of five Ig domains, a transmembrane domain, and a cytoplasmic region. In normal adult tissue, CD146 is primarily expressed by vascular endothelium and smooth muscle. CD146 is a key cell adhesion protein in vascular endothelial cell activity and angiogenesis, and has been used as marker of circulating endothelium cells (CECs) (PMID: 19356677). In addition to the membrane-anchored form of CD146, a soluble form of CD146 (sCD146, 105 kDa) has also been found in human plasma and in the supernatant of cultured human endothelial cells (PMID: 9462829; 19229070; 16374253; 14597988).

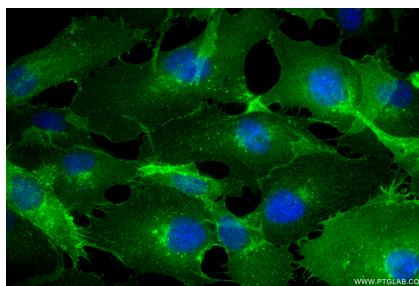
Storage

Storage:
Store at -20°C. Stable for one year after shipment.
Storage Buffer:
PBS with 0.02% sodium azide and 50% glycerol, pH7.3
Aliquoting is unnecessary for -20°C storage

Selected Validation Data



Various lysates were subjected to SDS PAGE followed by western blot with 86492-1-RR (MCAM antibody) at dilution of 1:10000 incubated at room temperature for 1.5 hours.



Immunofluorescent analysis of (4% PFA) fixed HUVEC cells using CD146/MCAM antibody (86492-1-RR, Clone: 250530B11) at dilution of 1:800 and CoraLite® 488-Conjugated Goat Anti-Rabbit IgG(H+L) (SA00013-2).