

For Research Use Only

PKLR Recombinant monoclonal antibody, PBS Only (Capture)

Catalog Number: 86485-2-PBS



Basic Information

Catalog Number:

86485-2-PBS

Source:

Rabbit

Isotype:

IgG

Immunogen Catalog Number:

AG17933

GenBank Accession Number:

BC025737

GeneID (NCBI):

5313

UNIPROT ID:

P30613

Full Name:

pyruvate kinase, liver and RBC

Calculated MW:

574 aa, 62 kDa

Purification Method:

Protein A purification

CloneNo.:

25123189

Applications

Tested Applications:

Sandwich ELISA, Indirect ELISA

Species Specificity:

human

Background Information

Storage

Storage:

Store at -80°C.

The product is shipped with ice packs. Upon receipt, store it immediately at -80°C

Storage Buffer:

PBS only, pH7.3

For technical support and original validation data for this product please contact:

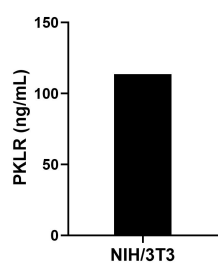
T: 4006900926

E: Proteintech-CN@ptglab.com

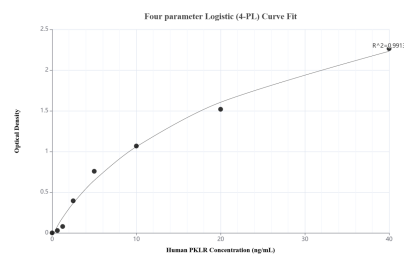
W: ptgcn.com

This product is exclusively available under Proteintech Group brand and is not available to purchase from any other manufacturer.

Selected Validation Data



The mean PKLR concentration was determined to be 113.54 ng/mL in NIH/3T3 cell extract based on a 1.20 mg/mL extract load.



Sandwich ELISA standard curve of MP02639-1, Human PKLR Recombinant Matched Antibody Pair - PBS only. 86485-2-PBS was coated to a plate as the capture antibody and incubated with serial dilutions of standard Ag17933. 86485-1-PBS was HRP conjugated as the detection antibody. Range: 0.625-40 ng/mL.