

PKLR Recombinant antibody

Catalog Number: 86485-1-RR

Basic Information

Catalog Number:

86485-1-RR

Concentration:

1000 µg/ml

Source:

Rabbit

Isotype:

IgG

Immunogen Catalog Number:

AG17933

GenBank Accession Number:

BC025737

GeneID (NCBI):

5313

UNIPROT ID:

P30613

Full Name:

pyruvate kinase, liver and RBC

Calculated MW:

574 aa, 62 kDa

Observed MW:

58-62 kDa

Purification Method:

Protein A purification

CloneNo.:

251231F12

Recommended Dilutions:

WB: 1:2000-1:10000

Applications

Tested Applications:

WB, ELISA

Species Specificity:

human

Positive Controls:

WB : HepG2 cells, MCF-7 cells

Background Information

PKLR(Pyruvate kinase isozymes R/L) is also named as PK1,PKL,which is a glycolytic enzyme that catalyzes the transphosphorylation from phosphoenolpyruvate (PEP) to ADP, yielding pyruvate and ATP. It is the last step of the glycolytic pathway and is essentially irreversible.It belongs to the pyruvate kinase family and There are 4 isozymes of pyruvate kinase in mammals: L, R, M1 and M2. L type is major isozyme in the liver, R is found in red cells, M1 is the main form in muscle, heart and brain, and M2 is found in early fetal tissues.Defects in PKLR are the cause of pyruvate kinase hyperactivity (PKHYP) and pyruvate kinase deficiency of red cells (PKRD).It can form a homotetramer(PMID:11960989).

Storage

Storage:

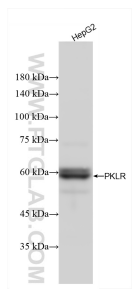
Store at -20°C. Stable for one year after shipment.

Storage Buffer:

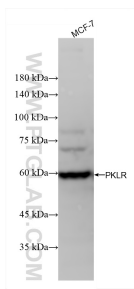
PBS with 0.02% sodium azide and 50% glycerol, pH7.3

Aliquoting is unnecessary for -20°C storage

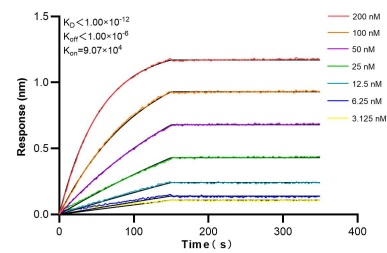
Selected Validation Data



HepG2 cells were subjected to SDS PAGE followed by western blot with 86485-1-RR (PKLR antibody) at dilution of 1:5000 incubated at room temperature for 1.5 hours.



MCF-7 cells were subjected to SDS PAGE followed by western blot with 86485-1-RR (PKLR antibody) at dilution of 1:5000 incubated at room temperature for 1.5 hours.



Biolayer interferometry (BLI) kinetic assays of 86485-1-RR against Human PKLR were performed. The affinity constant is below 1 pM.