

For Research Use Only

# Mouse Ccl17 Recombinant monoclonal antibody, PBS Only (Capture)

Catalog Number:86482-3-PBS



## Basic Information

<b>Catalog Number:</b> 86482-3-PBS	<b>GenBank Accession Number:</b> NM_011332.3	<b>Purification Method:</b> Protein A purification
<b>Source:</b> Rabbit	<b>GeneID (NCBI):</b> 20295	<b>CloneNo.:</b> 250385F4
<b>Isotype:</b> IgG	<b>UNIPROT ID:</b> F6R5P4	
<b>Immunogen Catalog Number:</b> EG3319	<b>Full Name:</b> chemokine (C-C motif) ligand 17	
	<b>Calculated MW:</b> 11 kDa	

## Applications

**Tested Applications:**  
Sandwich ELISA, Indirect ELISA

**Species Specificity:**  
mouse

## Background Information

### Storage

**Storage:**  
Store at -80°C.  
**The product is shipped with ice packs. Upon receipt, store it immediately at -80°C**

**Storage Buffer:**  
PBS only, pH7.3

For technical support and original validation data for this product please contact:

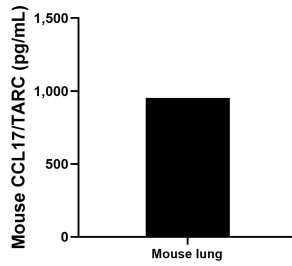
T: 4006900926

E: [Proteintech-CN@ptglab.com](mailto:Proteintech-CN@ptglab.com)

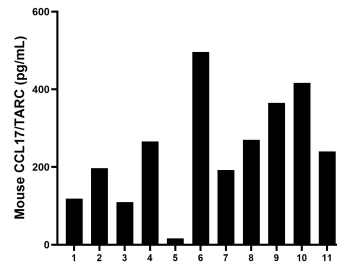
W: [ptgcn.com](http://ptgcn.com)

**This product is exclusively available under Proteintech Group brand and is not available to purchase from any other manufacturer.**

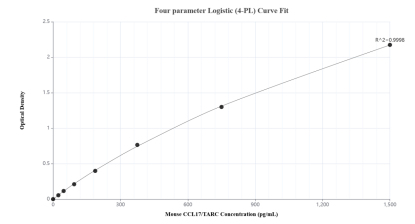
## Selected Validation Data



Mouse lung, cut into 1-2 mm pieces, was cultured in RPMI 1640 supplemented with 10% fetal bovine serum, 2 mM L-glutamine, 100 U/mL penicillin, and 100  $\mu$ g/mL streptomycin sulfate. An aliquot of the cell culture supernatant was removed, assayed for CCL17/TARC, and measured 952.8 pg/mL.



Serum of eleven mice was measured. The CCL17/TARC concentration of detected samples was determined to be 244.4 pg/mL with a range of 16.2-496.4 pg/mL.



Sandwich ELISA standard curve of MP02817-1, Mouse CCL17/TARC Recombinant Matched Antibody Pair - PBS only. 86482-3-PBS was coated to a plate as the capture antibody and incubated with serial dilutions of standard Eg3319. 86482-2-PBS was HRP conjugated as the detection antibody. Range: 23.4-1500 pg/mL.