

For Research Use Only

# CCL14 Recombinant antibody, PBS Only (Capture)

Catalog Number: 86478-2-PBS



## Basic Information

Catalog Number: 86478-2-PBS	GenBank Accession Number: NM_032963.3	Purification Method: Protein A purification
Concentration: 1 mg/ml	GeneID (NCBI): 6358	CloneNo.: 250487C7
Source: Rabbit	UNIPROT ID: Q16627-1	
Isotype: IgG	Full Name: chemokine (C-C motif) ligand 14	
Immunogen Catalog Number: EG2879	Calculated MW: 11k kDa	

## Applications

**Tested Applications:**  
Cytometric bead array, Sandwich ELISA, Indirect ELISA,  
Sample test

**Species Specificity:**  
human

## Background Information

### Storage

**Storage:**  
Store at -80°C.  
**The product is shipped with ice packs. Upon receipt, store it immediately at -80°C**

**Storage Buffer:**  
PBS only, pH7.3

For technical support and original validation data for this product please contact:

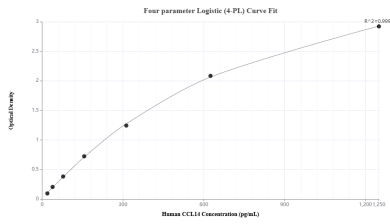
T: 4006900926

E: [Proteintech-CN@ptglab.com](mailto:Proteintech-CN@ptglab.com)

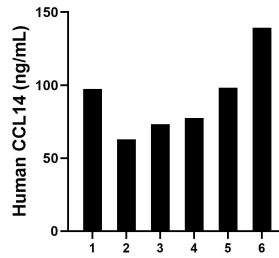
W: [ptgcn.com](http://ptgcn.com)

**This product is exclusively available under Proteintech Group brand and is not available to purchase from any other manufacturer.**

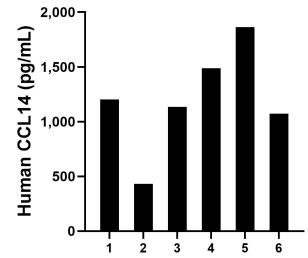
## Selected Validation Data



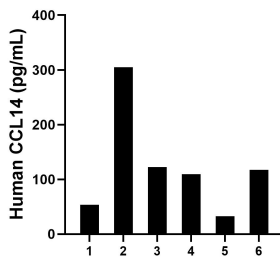
Sandwich ELISA standard curve of MP02465-1, Human CCL14 Recombinant Matched Antibody Pair - PBS only. 86478-2-PBS was coated to a plate as the capture antibody and incubated with serial dilutions of standard Eg2879. 86478-1-PBS was HRP conjugated as the detection antibody. Range: 19.5-1250 pg/mL



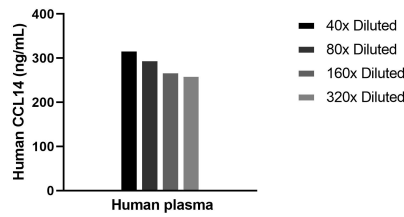
Plasma of six individual healthy human donors was measured. The human CCL14 concentration of detected samples was determined to be 91.45 ng/mL with a range of 62.87-139.32 ng/mL



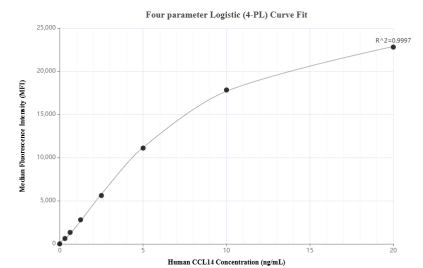
Saliva of six individual healthy human donors was measured. The human CCL14 concentration of detected samples was determined to be 1,198.7 pg/mL with a range of 431.7-1,862.1 pg/mL



Urine of six individual healthy human donors was measured. The human CCL14 concentration of detected samples was determined to be 123.44 pg/mL with a range of 32.9-304.6 pg/mL



The mean CCL14 concentration was determined to be 286.7 ng/mL in human plasma.



Cytometric bead array standard curve of MP02465-1, CCL14 Recombinant Matched Antibody Pair, PBS Only. Capture antibody: 86478-2-PBS. Detection antibody: 86478-1-PBS. Standard: Eg2879. Range: 0.312-20 ng/mL