

For Research Use Only

CHMP6 Recombinant monoclonal antibody

Catalog Number: 86474-3-RR



Basic Information

Catalog Number: 86474-3-RR	GenBank Accession Number: BC010108	Purification Method: Protein A purification
Source: Rabbit	GeneID (NCBI): 79643	CloneNo.: 251259C5
Isotype: IgG	UNIPROT ID: Q96FZ7	Recommended Dilutions: WB: 1:5000-1:50000 IF/ICC: 1:50-1:500
Immunogen Catalog Number: AG9357	Full Name: chromatin modifying protein 6	
	Calculated MW: 201 aa, 23 kDa	
	Observed MW: 28-30 kDa	

Applications

Tested Applications: WB, IF/ICC, ELISA	Positive Controls: WB : A375 cells, A431 cells, Jurkat cells, U-937 cells, mouse testis tissue, rat testis tissue, rat lung tissue
Species Specificity: human, mouse, rat	IF/ICC : U-937 cells,

Background Information

CHMP6 (charged multivesicular body protein 6) is a protein that plays a significant role in the formation of multivesicular bodies (MVBs) within cells. It is a component of the endosomal sorting complex required for transport III (ESCRT-III), which is involved in the sorting and transport of proteins within the cell. CHMP6 has been identified as a novel prognostic biomarker in bladder cancer, where it enhances cell survival and migration by regulating the cell cycle. (PMID: 40630215)

Storage

Storage:
Store at -20°C. Stable for one year after shipment.
Storage Buffer:
PBS with 0.02% sodium azide and 50% glycerol, pH7.3
Aliquoting is unnecessary for -20°C storage

For technical support and original validation data for this product please contact:

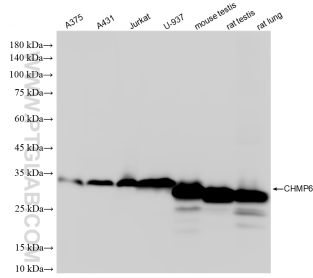
T: 4006900926

E: Proteintech-CN@ptglab.com

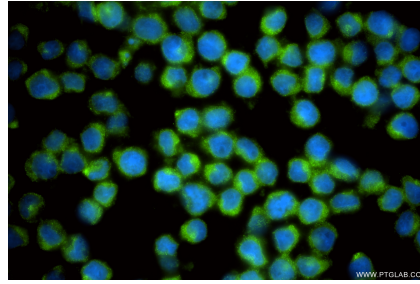
W: ptgcn.com

This product is exclusively available under Proteintech Group brand and is not available to purchase from any other manufacturer.

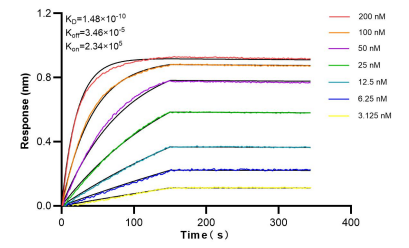
Selected Validation Data



Various lysates were subjected to SDS PAGE followed by western blot with 86474-3-RR (CHMP6 antibody) at dilution of 1:10000 incubated at room temperature for 1.5 hours.



Immunofluorescent analysis of (4% PFA) fixed U-937 cells using CHMP6 antibody (86474-3-RR, Clone: 251259C5) at dilution of 1:200 and CoraLite® 488-Conjugated Goat Anti-Rabbit IgG(H+L) (SA00013-2).



Biolayer interferometry (BLI) kinetic assays of 86474-3-RR against Human CHIMP6 were performed. The affinity constant is 0.148 nM.