

For Research Use Only

Cytokeratin 8 Recombinant monoclonal antibody

Catalog Number: 86457-4-RR



Basic Information

Catalog Number:

86457-4-RR

Source:

Rabbit

Isotype:

IgG

GenBank Accession Number:

BC000654

GeneID (NCBI):

3856

UNIPROT ID:

P05787

Full Name:

keratin 8

Calculated MW:

54 kDa

Observed MW:

52 kDa

Purification Method:

Protein A purification

CloneNo.:

251045E11

Recommended Dilutions:

WB: 1:5000-1:50000

IHC: 1:1000-1:4000

IF-P: 1:200-1:800

IF/ICC: 1:1000-1:4000

Applications

Tested Applications:

WB, IHC, IF/ICC, IF-P, ELISA

Species Specificity:

human, mouse, rat

Note-IHC: suggested antigen retrieval with TE buffer pH 9.0; (*) Alternatively, antigen retrieval may be performed with citrate buffer pH 6.0

Positive Controls:

WB : HeLa cells, A431 cell, HaCaT cells, MCF-7 cells, C6 cells, mouse skin tissue, rat skin tissue

IHC : human tonsil tissue, human breast cancer tissue, Human Kidney(renal cell) Cancer, mouse liver tissue, rat liver tissue

IF-P : human breast cancer tissue,

IF/ICC : A431 cells, HeLa cells

Background Information

Cytokeratin 8 (CK8) is a protein that belongs to the cytokeratin family, which is a group of structural proteins found in the intracytoplasmic cytoskeleton of epithelial cells. CK8 forms intermediate filaments within the cytoplasm of simple epithelial cells, typically as a dimer with cytokeratin 18 (CK18). These filaments provide a stabilizing framework that helps determine cell shape and enables cells to cope with mechanical stress. CK8/CK18 filaments also serve as a mesh of "paths" for signaling molecules, metabolites, and pathogens to travel within the cell in an organized manner. CK8 is expressed in various epithelial tissues and is particularly associated with glandular and simple epithelia. Its expression is also a significant marker in several types of cancer, including lung and esophageal cancer, where it can indicate tumor progression and poor prognosis.

Storage

Storage:

Store at -20°C. Stable for one year after shipment.

Storage Buffer:

PBS with 0.02% sodium azide and 50% glycerol, pH7.3

Aliquoting is unnecessary for -20°C storage

For technical support and original validation data for this product please contact:

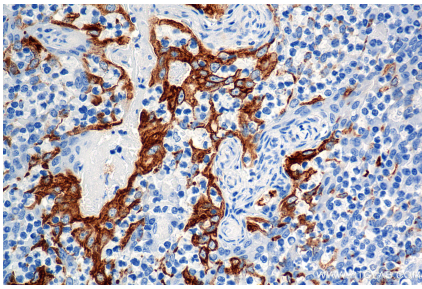
T: 4006900926

E: Proteintech-CN@ptglab.com

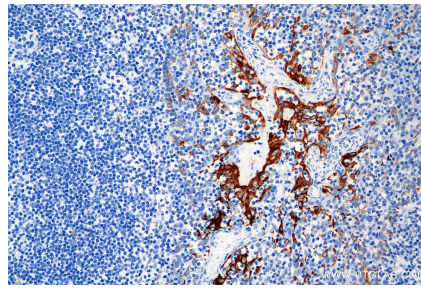
W: ptgcn.com

This product is exclusively available under Proteintech Group brand and is not available to purchase from any other manufacturer.

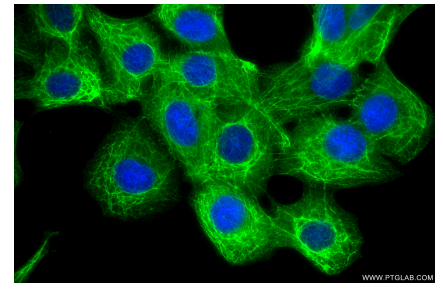
Selected Validation Data



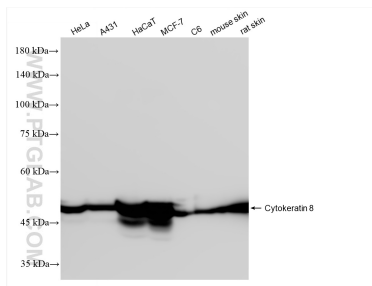
Immunohistochemical analysis of paraffin-embedded human tonsil tissue slide using 86457-4-RR (Cytokeratin 8 antibody) at dilution of 1:2000 (under 40x lens). Heat mediated antigen retrieval with Tris-EDTA buffer (pH 9.0).



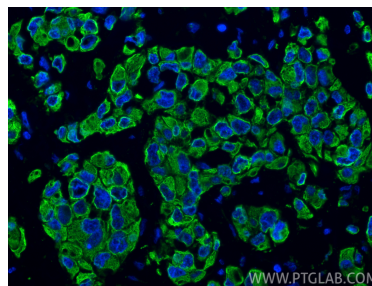
Immunohistochemical analysis of paraffin-embedded human tonsil tissue slide using 86457-4-RR (Cytokeratin 8 antibody) at dilution of 1:2000 (under 20x lens). Heat mediated antigen retrieval with Tris-EDTA buffer (pH 9.0).



Immunofluorescent analysis of (-20°C Methanol) fixed A431 cells using Cytokeratin 8 antibody (86457-4-RR, Clone: 251045E11) at dilution of 1:2000 and CoraLite®488-Conjugated Goat Anti-Rabbit IgG(H+L) (SA00013-2).



Various lysates were subjected to SDS PAGE followed by western blot with 86457-4-RR (Cytokeratin 8 antibody) at dilution of 1:10000 incubated at room temperature for 1.5 hours.



Immunofluorescent analysis of (4% PFA) fixed paraffin-embedded human breast cancer tissue using Cytokeratin 8 antibody (86457-4-RR, Clone: 251045E11) at dilution of 1:400 and CoraLite®488-Conjugated Goat Anti-Rabbit IgG(H+L) (SA00013-2). Heat mediated antigen retrieval with Tris-EDTA buffer (pH 9.0).