

Entactin Recombinant monoclonal antibody

Catalog Number: 86456-1-RR

Basic Information

Catalog Number: 86456-1-RR	GenBank Accession Number: NM_010917.3	Purification Method: Protein A purification
Concentration: 1000 µg/ml	GeneID (NCBI): 18073	CloneNo.: 251203H4
Source: Rabbit	UNIPROT ID: P10493	Recommended Dilutions: WB: 1:5000-1:50000 IHC: 1:2000-1:8000 IF-P: 1:250-1:1000
Isotype: IgG	Full Name: nidogen 1	
Immunogen Catalog Number: EG3030	Calculated MW: 137 kDa Observed MW: 150 kDa	

Applications

Tested Applications: WB, IHC, IF-P, ELISA Species Specificity: mouse, rat Note-IHC: suggested antigen retrieval with TE buffer pH 9.0; (*) Alternatively, antigen retrieval may be performed with citrate buffer pH 6.0	Positive Controls: WB : mouse heart tissue, rat heart tissue, mouse skeletal muscle tissue IHC : mouse heart tissue, IF-P : mouse heart tissue,
--	--

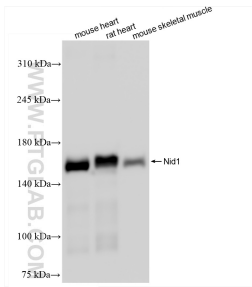
Background Information

Nidogen 1 (Entactin), first identified from a basement membrane-secreting cell line and the murine EHS tumor, is together with perlecan, laminin, and collagen IV, a ubiquitous component of basement membranes (PMID: 19530222). Nidogen-1 is made by mesenchymal cells and is incorporated into the epithelial BM. It is a sulfated glycoprotein of 150 kDa with three globular domains, G1, G2 and G3, and contains binding sites for other ECM molecules (PMID: 10958695, 10671374).

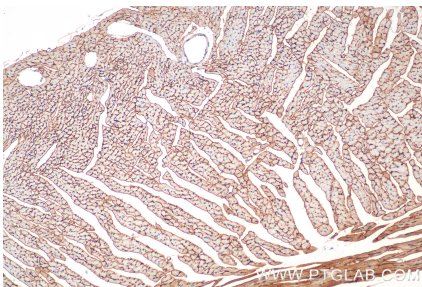
Storage

Storage:
Store at -20°C. Stable for one year after shipment.
Storage Buffer:
PBS with 0.02% sodium azide and 50% glycerol, pH7.3
 Aliquoting is unnecessary for -20°C storage

Selected Validation Data



Various lysates were subjected to SDS PAGE followed by western blot with 86456-1-RR (Entactin antibody) at dilution of 1:20000 incubated at room temperature for 1.5 hours.



Immunohistochemical analysis of paraffin-embedded mouse heart tissue slide using 86456-1-RR (Entactin antibody) at dilution of 1:4000 (under 10x lens). Heat mediated antigen retrieval with Tris-EDTA buffer (pH 9.0).

Immunofluorescent analysis of (4% PFA) fixed paraffin-embedded mouse heart tissue using Entactin antibody (86456-1-RR, Clone: 251203H4) at dilution of 1:500 and CoraLite®488-Conjugated Goat Anti-Rabbit IgG(H+L) (SA00013-2). Heat mediated antigen retrieval with Tris-EDTA buffer (pH 9.0).