

For Research Use Only

Mouse Entactin Recombinant monoclonal antibody, PBS Only

Catalog Number: 86456-1-PBS



Basic Information

Catalog Number:	86456-1-PBS	GenBank Accession Number:	NM_010917.3	Purification Method:	Protein A purification
Concentration:	1000 µg/ml	GeneID (NCBI):	18073	CloneNo.:	251203H4
Source:	Rabbit	UNIPROT ID:	P10493		
Isotype:	IgG	Full Name:	nidogen 1		
Immunogen Catalog Number:	EG3030	Calculated MW:	137 kDa		
		Observed MW:	150 kDa		

Applications

Tested Applications:
WB, IHC, IF-P, Indirect ELISA

Species Specificity:
mouse, rat

Background Information

Nidogen 1 (Entactin), first identified from a basement membrane-secreting cell line and the murine EHS tumor, is together with perlecan, laminin, and collagen IV, a ubiquitous component of basement membranes (PMID: 19530222). Nidogen-1 is made by mesenchymal cells and is incorporated into the epithelial BM. It is a sulfated glycoprotein of 150 kDa with three globular domains, G1, G2 and G3, and contains binding sites for other ECM molecules (PMID: 10958695, 10671374).

Storage

Storage:
Store at -80°C.

The product is shipped with ice packs. Upon receipt, store it immediately at -80°C

Storage Buffer:
PBS only, pH7.3

For technical support and original validation data for this product please contact:

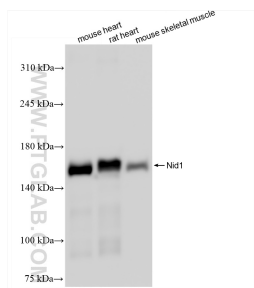
T: 4006900926

E: Proteintech-CN@ptglab.com

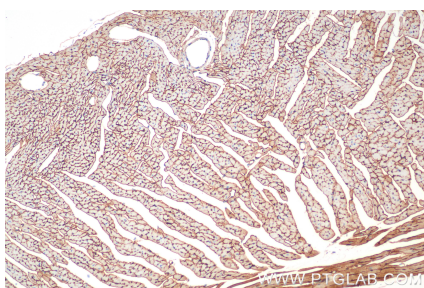
W: ptgcn.com

This product is exclusively available under Proteintech Group brand and is not available to purchase from any other manufacturer.

Selected Validation Data



Various lysates were subjected to SDS PAGE followed by western blot with 86456-1-RR (Entactin antibody) at dilution of 1:20000 incubated at room temperature for 1.5 hours. This data was developed using the same antibody clone with 86456-1-PBS in a different storage buffer formulation.



Immunohistochemical analysis of paraffin-embedded mouse heart tissue slide using 86456-1-RR (Entactin antibody) at dilution of 1:4000 (under 10x lens). Heat mediated antigen retrieval with Tris-EDTA buffer (pH 9.0). This data was developed using the same antibody clone with 86456-1-PBS in a different storage buffer formulation.

Immunofluorescent analysis of (4% PFA) fixed paraffin-embedded mouse heart tissue using Entactin antibody (86456-1-RR, Clone: 251203H4) at dilution of 1:500 and CoraLite®488-Conjugated Goat Anti-Rabbit IgG(H+L) (SA00013-2). Heat mediated antigen retrieval with Tris-EDTA buffer (pH 9.0). This data was developed using the same antibody clone with 86456-1-PBS in a different storage buffer formulation.