

For Research Use Only

CTP synthase Recombinant antibody

Catalog Number: 86455-1-RR



Basic Information

Catalog Number:

86455-1-RR

Concentration:

1000 µg/ml

Source:

Rabbit

Isotype:

IgG

Immunogen Catalog Number:

AG8707

GenBank Accession Number:

BC009408

GeneID (NCBI):

1503

UNIPROT ID:

P17812

Full Name:

CTP synthase

Calculated MW:

591 aa, 67 kDa

Observed MW:

67 kDa

Purification Method:

Protein A purification

CloneNo.:

251260F2

Recommended Dilutions:

WB: 1:5000-1:50000

Applications

Tested Applications:

WB, ELISA

Species Specificity:

human, mouse

Positive Controls:

WB : HeLa cells, HepG2 cells, HEK-293 cells, K-562 cells, Raji cells, NIH/3T3 cells

Background Information

CTP synthase (CTPS) is a ubiquitous, cytosolic glutamine amidotransferase that catalyzes the ATP-dependent conversion of uridine-5' -triphosphate (UTP) to cytidine-5' -triphosphate (CTP) - the final, rate-limiting step in the de novo pyrimidine biosynthetic pathway.

Storage

Storage:

Store at -20°C. Stable for one year after shipment.

Storage Buffer:

PBS with 0.02% sodium azide and 50% glycerol, pH7.3

Aliquoting is unnecessary for -20°C storage

For technical support and original validation data for this product please contact:

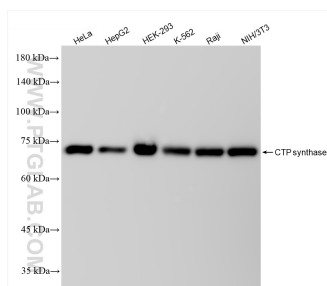
T: 4006900926

E: Proteintech-CN@ptglab.com

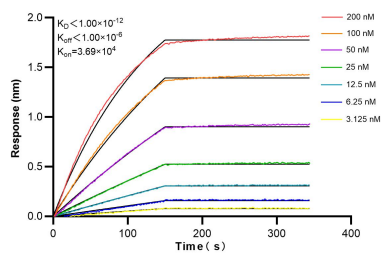
W: ptgcn.com

This product is exclusively available under Proteintech Group brand and is not available to purchase from any other manufacturer.

Selected Validation Data



Various lysates were subjected to SDS PAGE followed by western blot with 86455-1-RR (CTPS antibody) at dilution of 1:10000 incubated at room temperature for 1.5 hours.



Biolayer interferometry (BLI) kinetic assays of 86455-1-RR against Human CTP synthase were performed. The affinity constant is below 1 pM.