

For Research Use Only

# CTP synthase Recombinant antibody, PBS Only

Catalog Number: 86455-1-PBS



## Basic Information

Catalog Number:

86455-1-PBS

Concentration:

1000 µg/ml

Source:

Rabbit

Isotype:

IgG

Immunogen Catalog Number:

AG8707

GenBank Accession Number:

BC009408

GeneID (NCBI):

1503

UNIPROT ID:

P17812

Full Name:

CTP synthase

Calculated MW:

591 aa, 67 kDa

Observed MW:

67 kDa

Purification Method:

Protein A purification

CloneNo.:

251260F2

## Applications

Tested Applications:

WB, Indirect ELISA

Species Specificity:

human, mouse

## Background Information

CTP synthase (CTPS) is a ubiquitous, cytosolic glutamine amidotransferase that catalyzes the ATP-dependent conversion of uridine-5' -triphosphate (UTP) to cytidine-5' -triphosphate (CTP) - the final, rate-limiting step in the de novo pyrimidine biosynthetic pathway.

## Storage

Storage:

Store at -80°C.

The product is shipped with ice packs. Upon receipt, store it immediately at -80°C

Storage Buffer:

PBS only, pH7.3

For technical support and original validation data for this product please contact:

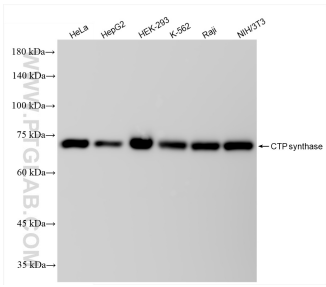
T: 4006900926

E: Proteintech-CN@ptglab.com

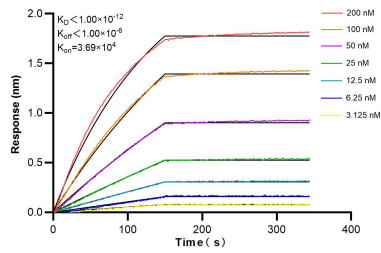
W: ptgcn.com

This product is exclusively available under Proteintech Group brand and is not available to purchase from any other manufacturer.

## Selected Validation Data



Various lysates were subjected to SDS PAGE followed by western blot with 86455-1-RR (CTPS antibody) at dilution of 1:10000 incubated at room temperature for 1.5 hours. This data was developed using the same antibody clone with 86455-1-PBS in a different storage buffer formulation.



Biolayer interferometry (BLI) kinetic assays of 86455-1-RR against Human CTP synthase were performed. The affinity constant is below 1 pM.