

GRWD1 Recombinant antibody

Catalog Number: 86451-3-RR

Basic Information

Catalog Number: 86451-3-RR	GenBank Accession Number: BC002440	Purification Method: Protein A purification
Concentration: 1000 µg/ml	GeneID (NCBI): 83743	CloneNo.: 251273F6
Source: Rabbit	UNIPROT ID: Q9BQ67	Recommended Dilutions: WB: 1:5000-1:50000 IF/ICC: 1:500-1:2000
Isotype: IgG	Full Name: glutamate-rich WD repeat containing 1	
Immunogen Catalog Number: AG0367	Calculated MW: 49 kDa	
	Observed MW: 49-63 kDa	

Applications

Tested Applications: WB, IF/ICC, ELISA	Positive Controls:
Species Specificity: human, mouse	WB : HeLa cells, HEK-293T cells, PC-3 cells, SKOV-3 cells, RT-4 cells, NIH/3T3 cells
	IF/ICC : HeLa cells, HepG2 cells

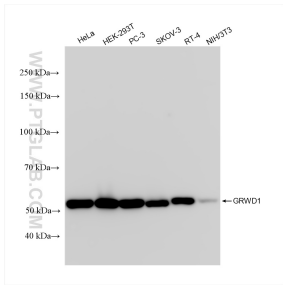
Background Information

WD-repeat proteins are a class of functionally divergent molecules that cooperate with other proteins to regulate cellular processes. WD-repeat proteins have been implicated in a variety of cellular functions that are mostly regulatory in nature, including cytoskeleton organization, vesicular fusion, pre-mRNA splicing, and cell cycle regulation. WD-repeat-containing protein designated glutamate-rich WD repeat (GRWD1) is a component of the 50S and 80S preribosomal complexes and plays a role in ribosome biogenesis and during myeloid differentiation its levels are regulated. (PMID:15885502)

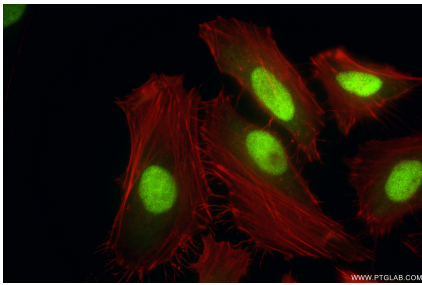
Storage

Storage:
Store at -20°C. Stable for one year after shipment.
Storage Buffer:
PBS with 0.02% sodium azide and 50% glycerol, pH7.3
Aliquoting is unnecessary for -20°C storage

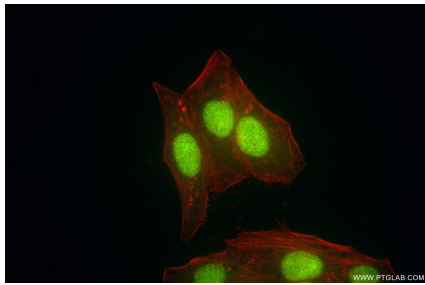
Selected Validation Data



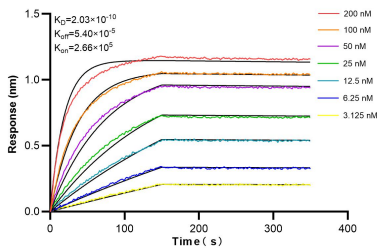
Various lysates were subjected to SDS PAGE followed by western blot with 86451-3-RR (GRWD1 antibody) at dilution of 1:10000 incubated at room temperature for 1.5 hours.



Immunofluorescent analysis of (4% PFA) fixed HeLa cells using GRWD1 antibody (86451-3-RR, Clone: 251273F6) at dilution of 1:1000 and CoraLite®488-Conjugated Goat Anti-Rabbit IgG(H+L) (SA00013-2), CL594-Phalloidin (red).



Immunofluorescent analysis of (4% PFA) fixed HepG2 cells using GRWD1 antibody (86451-3-RR, Clone: 251273F6) at dilution of 1:1000 and CoraLite®488-Conjugated Goat Anti-Rabbit IgG(H+L) (SA00013-2), CL594-Phalloidin (red).



Biolayer interferometry (BLI) kinetic assays of 86451-3-RR against Human GRWD1 were performed. The affinity constant is 0.203 nM.