

For Research Use Only

# GRWD1 Recombinant antibody, PBS Only

Catalog Number: 86451-3-PBS



## Basic Information

Catalog Number:	86451-3-PBS	GenBank Accession Number:	BC002440	Purification Method:	Protein A purification
Concentration:	1000 µg/ml	GeneID (NCBI):	83743	CloneNo.:	251273F6
Source:	Rabbit	UNIPROT ID:	Q9BQ67		
Isotype:	IgG	Full Name:	glutamate-rich WD repeat containing 1		
Immunogen Catalog Number:	AG0367	Calculated MW:	49 kDa		
		Observed MW:	49-63 kDa		

## Applications

**Tested Applications:**  
WB, IF/ICC, Indirect ELISA

**Species Specificity:**  
human, mouse

## Background Information

WD-repeat proteins are a class of functionally divergent molecules that cooperate with other proteins to regulate cellular processes. WD-repeat proteins have been implicated in a variety of cellular functions that are mostly regulatory in nature, including cytoskeleton organization, vesicular fusion, pre-mRNA splicing, and cell cycle regulation. WD-repeat-containing protein designated glutamate-rich WD repeat (GRWD1) is a component of the 50S and 80S preribosomal complexes and plays a role in ribosome biogenesis and during myeloid differentiation its levels are regulated. (PMID:15885502)

## Storage

**Storage:**  
Store at -80°C.  
**The product is shipped with ice packs. Upon receipt, store it immediately at -80°C**

**Storage Buffer:**  
PBS only, pH7.3

For technical support and original validation data for this product please contact:

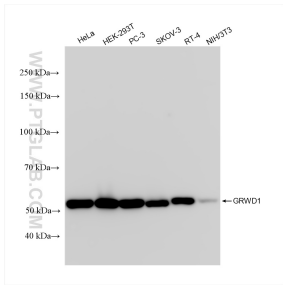
T: 4006900926

E: [Proteintech-CN@ptglab.com](mailto:Proteintech-CN@ptglab.com)

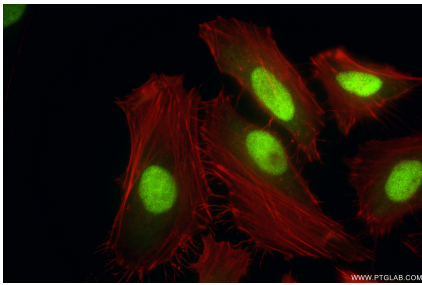
W: [ptgcn.com](http://ptgcn.com)

**This product is exclusively available under Proteintech Group brand and is not available to purchase from any other manufacturer.**

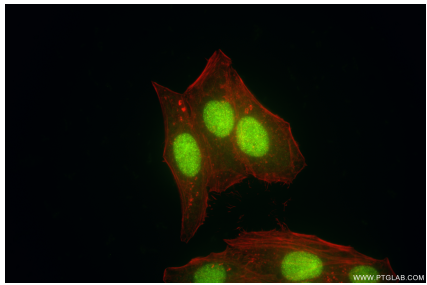
Selected Validation Data



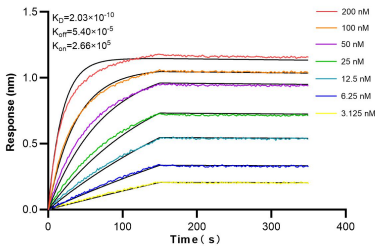
Various lysates were subjected to SDS PAGE followed by western blot with 86451-3-RR (GRWD1 antibody) at dilution of 1:10000 incubated at room temperature for 1.5 hours. This data was developed using the same antibody clone with 86451-3-PBS in a different storage buffer formulation.



Immunofluorescent analysis of (4% PFA) fixed HeLa cells using GRWD1 antibody (86451-3-RR, Clone: 251273F6 ) at dilution of 1:1000 and CoraLite®488-Conjugated Goat Anti-Rabbit IgG(H+L) (SA00013-2), CL594-Phalloidin (red). This data was developed using the same antibody clone with 86451-3-PBS in a different storage buffer formulation.



Immunofluorescent analysis of (4% PFA) fixed HepG2 cells using GRWD1 antibody (86451-3-RR, Clone: 251273F6 ) at dilution of 1:1000 and CoraLite®488-Conjugated Goat Anti-Rabbit IgG(H+L) (SA00013-2), CL594-Phalloidin (red). This data was developed using the same antibody clone with 86451-3-PBS in a different storage buffer formulation.



Biolayer interferometry (BLI) kinetic assays of 86451-3-RR against Human GRWD1 were performed. The affinity constant is 0.203 nM.