

For Research Use Only

ARD1A Recombinant monoclonal antibody, PBS Only (Detector)

Catalog Number:86450-4-PBS



Basic Information

Catalog Number:

86450-4-PBS

Source:

Rabbit

Isotype:

IgG

Immunogen Catalog Number:

AG6519

GenBank Accession Number:

BC000308

GeneID (NCBI):

8260

UNIPROT ID:

P41227

Full Name:

ARD1 homolog A, N-acetyltransferase
(S. cerevisiae)

Calculated MW:

26 kDa

Purification Method:

Protein A purification

CloneNo.:

251237C2

Applications

Tested Applications:

Sandwich ELISA, Indirect ELISA

Species Specificity:

human

Background Information

Storage

Storage:

Store at -80°C.

The product is shipped with ice packs. Upon receipt, store it immediately at -80°C

Storage Buffer:

PBS only, pH7.3

For technical support and original validation data for this product please contact:

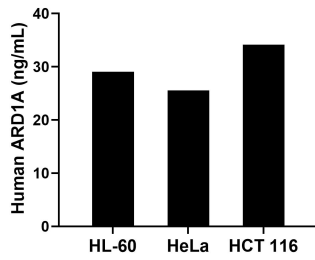
T: 4006900926

E: Proteintech-CN@ptglab.com

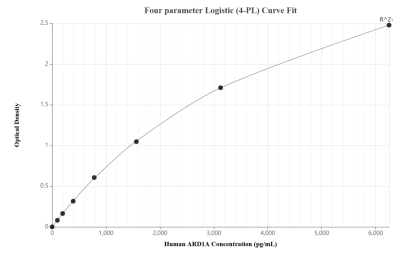
W: ptgcn.com

This product is exclusively available under Proteintech Group brand and is not available to purchase from any other manufacturer.

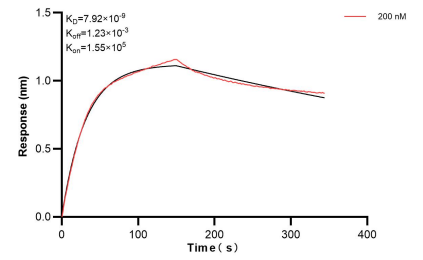
Selected Validation Data



The mean ARD1A concentration was determined to be 29.07 ng/mL in HL-60 cell extract based on a 1.20 mg/mL extract load, 25.52 ng/mL in HeLa cell extract based on a 1.20 mg/mL extract load and 34.15 ng/mL in HCT 116 cell extract based on a 1.30 mg/mL extract load.



Sandwich ELISA standard curve of MP02442-2, Human ARD1A Recombinant Matched Antibody Pair - PBS only. 86450-5-PBS was coated to a plate as the capture antibody and incubated with serial dilutions of standard Ag6519. 86450-4-PBS was HRP conjugated as the detection antibody. Range: 97.7-6250 pg/mL



Bi-layer interferometry (BLI) kinetic assay of 86450-4-PBS against Human ARD1A were performed. The affinity constant is 7.92 nM.