

For Research Use Only

EXO1 Recombinant monoclonal antibody, PBS Only (Detector)

Catalog Number: 86445-2-PBS



Basic Information

Catalog Number:

86445-2-PBS

Source:

Rabbit

Isotype:

IgG

Immunogen Catalog Number:

AG9253

GenBank Accession Number:

BC007491

GeneID (NCBI):

9156

UNIPROT ID:

Q9UQ84

Full Name:

exonuclease 1

Calculated MW:

94 kDa

Purification Method:

Protein A purification

CloneNo.:

251210B2

Applications

Tested Applications:

Sandwich ELISA, Indirect ELISA

Species Specificity:

human

Background Information

Storage

Storage:

Store at -80°C.

The product is shipped with ice packs. Upon receipt, store it immediately at -80°C

Storage Buffer:

PBS only, pH7.3

For technical support and original validation data for this product please contact:

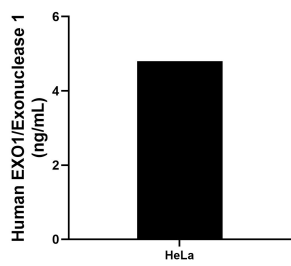
T: 4006900926

E: Proteintech-CN@ptglab.com

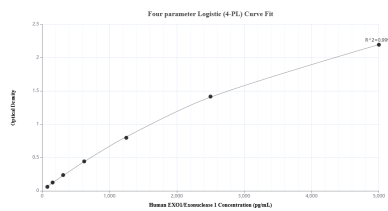
W: ptgcn.com

This product is exclusively available under Proteintech Group brand and is not available to purchase from any other manufacturer.

Selected Validation Data



The mean EXO1/Exonuclease 1 concentration was determined to be 4.80 ng/mL in HeLa cell extract based on a 1.2 mg/mL extract load.



Sandwich ELISA standard curve of MP02742-1, Human EXO1/Exonuclease 1 Recombinant Matched Antibody Pair - PBS only. 86445-1-PBS was coated to a plate as the capture antibody and incubated with serial dilutions of standard Ag9253. 86445-2-PBS was HRP conjugated as the detection antibody. Range: 78.1-5000 pg/mL