

For Research Use Only

Mouse Fstl1 Recombinant monoclonal antibody, PBS Only (Detector)

Catalog Number: 86444-3-PBS



Basic Information

Catalog Number:

86444-3-PBS

Source:

Rabbit

Isotype:

IgG

Immunogen Catalog Number:

EG2859

GenBank Accession Number:

NM_008047.5

GeneID (NCBI):

14314

UNIPROT ID:

Q62356

Full Name:

folliculin-like 1

Calculated MW:

35 kDa

Purification Method:

Protein A purification

CloneNo.:

251240G4

Applications

Tested Applications:

Sandwich ELISA, Indirect ELISA

Species Specificity:

mouse

Background Information

Storage

Storage:

Store at -80°C.

The product is shipped with ice packs. Upon receipt, store it immediately at -80°C

Storage Buffer:

PBS only, pH7.3

For technical support and original validation data for this product please contact:

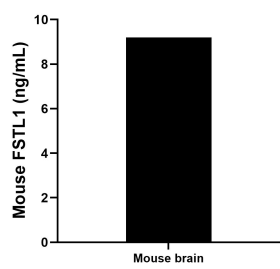
T: 4006900926

E: Proteintech-CN@ptglab.com

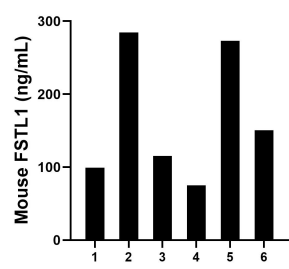
W: ptgcn.com

This product is exclusively available under Proteintech Group brand and is not available to purchase from any other manufacturer.

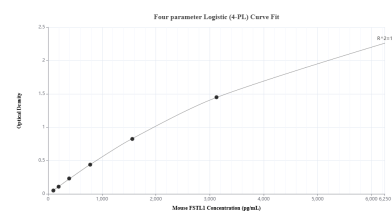
Selected Validation Data



The mean FSTL1 concentration was determined to be 9.20 ng/mL in mouse brain tissue extract based on a 6.6 mg/mL extract load.



Serum of six mice was measured. The mouse FSTL1 concentration of detected samples was determined to be 64.09 ng/mL with a range of 43.91 - 83.14 ng/mL



Sandwich ELISA standard curve of MP02461-2, Mouse FSTL1 Recombinant Matched Antibody Pair - PBS only. 86444-1-PBS was coated to a plate as the capture antibody and incubated with serial dilutions of standard Eg2859. 86444-3-PBS was HRP conjugated as the detection antibody. Range: 97.7-6250 pg/mL