

For Research Use Only

# Mouse Fstl1 Recombinant antibody, PBS Only (Detector)

Catalog Number: 86444-2-PBS



## Basic Information

Catalog Number:

86444-2-PBS

Concentration:

1 mg/ml

Source:

Rabbit

Isotype:

IgG

Immunogen Catalog Number:

EG2859

GenBank Accession Number:

NM\_008047.5

GeneID (NCBI):

14314

UNIPROT ID:

Q62356

Full Name:

folliculin-like 1

Calculated MW:

35 kDa

Purification Method:

Protein A purification

CloneNo.:

251240E6

## Applications

Tested Applications:

Cytometric bead array, Indirect ELISA, Sample test

Species Specificity:

mouse

## Background Information

### Storage

Storage:

Store at -80°C.

The product is shipped with ice packs. Upon receipt, store it immediately at -80°C

Storage Buffer:

PBS only, pH7.3

For technical support and original validation data for this product please contact:

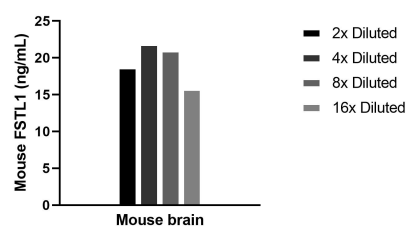
T: 4006900926

E: [Proteintech-CN@ptglab.com](mailto:Proteintech-CN@ptglab.com)

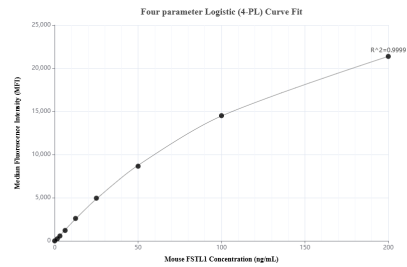
W: [ptgcn.com](http://ptgcn.com)

This product is exclusively available under Proteintech Group brand and is not available to purchase from any other manufacturer.

## Selected Validation Data



The mean FSTL1 concentration was determined to be 19.3 ng/mL in Mouse brain tissue extract based on a 7.0 mg/mL extract load.



Cytometric bead array standard curve of MP02461-1, MOUSE FSTL1 Recombinant Matched Antibody Pair, PBS Only. Capture antibody: 86444-1-PBS. Detection antibody: 86444-2-PBS. Standard: Eg2859. Range: 1.562-200 ng/mL.