

For Research Use Only

# SEPHS2 Recombinant antibody

Catalog Number: 86443-1-RR



## Basic Information

Catalog Number:

86443-1-RR

Concentration:

1000 µg/ml

Source:

Rabbit

Isotype:

IgG

Immunogen Catalog Number:

AG5255

GenBank Accession Number:

BC016643

GeneID (NCBI):

22928

UNIPROT ID:

Q99611

Full Name:

selenophosphate synthetase 2

Calculated MW:

47 kDa

Observed MW:

47-50 kDa

Purification Method:

Protein A purification

CloneNo.:

251213A8

Recommended Dilutions:

WB: 1:1000-1:6000

## Applications

Tested Applications:

WB, ELISA

Species Specificity:

human, mouse, rat

Positive Controls:

WB : NCI-H1299 cells, mouse heart tissue, rat heart tissue

## Background Information

SEPHS2 (Selenophosphate synthetase 2), a selenophosphate synthetase, catalyzes the conversion of selenite and adenosine triphosphate (ATP) into selenophosphate. SEPHS2 is the rate-limiting enzyme that converts selenite to selenocysteine, a key substance in the synthesis of many selenium proteins such as glutathione peroxidase, thioredoxin reductase, and formate dehydrogenase (PMID: 40750759, 31695102).

## Storage

Storage:

Store at -20°C. Stable for one year after shipment.

Storage Buffer:

PBS with 0.02% sodium azide and 50% glycerol, pH7.3

Aliquoting is unnecessary for -20°C storage

For technical support and original validation data for this product please contact:

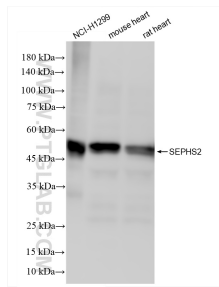
T: 4006900926

E: [Proteintech-CN@ptglab.com](mailto:Proteintech-CN@ptglab.com)

W: [ptgcn.com](http://ptgcn.com)

This product is exclusively available under Proteintech Group brand and is not available to purchase from any other manufacturer.

## Selected Validation Data



Various lysates were subjected to SDS PAGE followed by western blot with 86443-1-RR (SEPHS2 antibody) at dilution of 1:3000 incubated at room temperature for 1.5 hours.