

For Research Use Only

SLC25A13 Recombinant antibody, PBS Only (Detector)

Catalog Number: 86439-2-PBS



Basic Information

Catalog Number: 86439-2-PBS	GenBank Accession Number: BC006566	Purification Method: Protein A purification
Concentration: 1 mg/ml	GeneID (NCBI): 10165	CloneNo.: 250937F3
Source: Rabbit	UNIPROT ID: Q9UJ50	
Isotype: IgG	Full Name: solute carrier family 25, member 13 (citrin)	
Immunogen Catalog Number: AG1242	Calculated MW: 74 kDa	

Applications

Tested Applications:
Sandwich ELISA, Indirect ELISA, Sample test

Species Specificity:
human

Background Information

Storage

Storage:
Store at -80°C.
The product is shipped with ice packs. Upon receipt, store it immediately at -80°C

Storage Buffer:
PBS only, pH7.3

For technical support and original validation data for this product please contact:

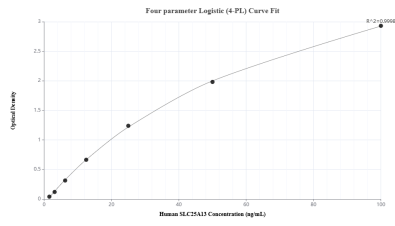
T: 4006900926

E: Proteintech-CN@ptglab.com

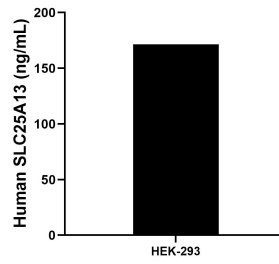
W: ptgcn.com

This product is exclusively available under Proteintech Group brand and is not available to purchase from any other manufacturer.

Selected Validation Data



Sandwich ELISA standard curve of MP02610-1, Human SLC25A13 Recombinant Matched Antibody Pair - PBS only. 86439-3-PBS was coated to a plate as the capture antibody and incubated with serial dilutions of standard Ag1242. 86439-2-PBS was HRP conjugated as the detection antibody. Range: 1.56-100 ng/mL



The mean SLC25A13 concentration was determined to be 171.52 ng/mL in HEK-293 cell extract based on a 1.2 mg/mL extract load.