

For Research Use Only

ALDH2 Recombinant antibody

Catalog Number: 86429-5-RR



Basic Information

Catalog Number:

86429-5-RR

Concentration:

1000 µg/ml

Source:

Rabbit

Isotype:

IgG

Immunogen Catalog Number:

AG7452

GenBank Accession Number:

BC002967

GeneID (NCBI):

217

UNIPROT ID:

P05091

Full Name:

aldehyde dehydrogenase 2 family
(mitochondrial)

Calculated MW:

56 kDa

Observed MW:

50-55 kDa

Purification Method:

Protein A purification

CloneNo.:

251287E9

Recommended Dilutions:

WB: 1:5000-1:50000

IF/ICC: 1:400-1:1600

Applications

Tested Applications:

WB, IF/ICC, ELISA

Species Specificity:

human, mouse, rat

Positive Controls:

WB : A549 cells, SK-BR-3 cells, HepG2 cells, mouse
liver tissue, rat liver tissue

IF/ICC : C2C12 cells, A549 cells

Background Information

Acetaldehyde dehydrogenase is the next enzyme after alcohol dehydrogenase in the major pathway of alcohol metabolism. It mediates NADP⁺-dependent oxidation of aldehydes into acids during detoxification of alcohol-derived acetaldehyde; lipid peroxidation; and metabolism of corticosteroids, biogenic amines and neurotransmitters. Genetic variation in ALDH2 is responsible for individual differences in responses to drinking alcohol. Thus, the absence of this enzyme is linked to alcohol intolerance and a reduced risk for alcoholism-related liver disease.

Storage

Storage:

Store at -20°C. Stable for one year after shipment.

Storage Buffer:

PBS with 0.02% sodium azide and 50% glycerol, pH7.3

Aliquoting is unnecessary for -20°C storage

For technical support and original validation data for this product please contact:

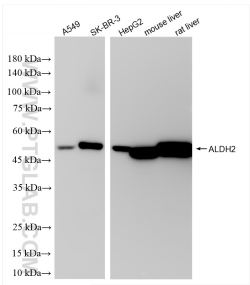
T: 4006900926

E: Proteintech-CN@ptglab.com

W: ptgcn.com

This product is exclusively available under Proteintech Group brand and is not available to purchase from any other manufacturer.

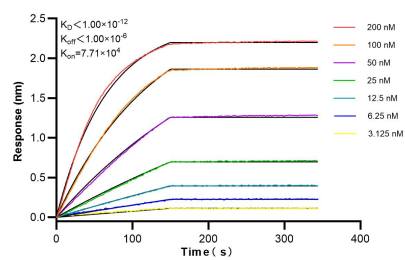
Selected Validation Data



Immunofluorescent analysis of (4% PFA) fixed C2C 12 cells using ALDH2 antibody (86429-5-RR, Clone: 251287E9) at dilution of 1:800 and CoraLite®488-Conjugated Goat Anti-Rabbit IgG(H+L) (SA00013-2), CL594-Phalloidin (red).

Immunofluorescent analysis of (4% PFA) fixed A549 cells using ALDH2 antibody (86429-5-RR, Clone: 251287E9) at dilution of 1:800 and CoraLite®488-Conjugated Goat Anti-Rabbit IgG(H+L) (SA00013-2), CL594-Phalloidin (red).

Various lysates were subjected to SDS PAGE followed by western blot with 86429-5-RR (ALDH2 antibody) at dilution of 1:10000 incubated at room temperature for 1.5 hours.



Biolayer interferometry (BLI) kinetic assays of 86429-5-RR against Human ALDH2 were performed. The affinity constant is below 1 pM.