

For Research Use Only

# ALDH2 Recombinant antibody, PBS Only

Catalog Number: 86429-5-PBS



## Basic Information

Catalog Number:

86429-5-PBS

Concentration:

1000  $\mu$ g/ml

Source:

Rabbit

Isotype:

IgG

Immunogen Catalog Number:

AG7452

GenBank Accession Number:

BC002967

GeneID (NCBI):

217

UNIPROT ID:

P05091

Full Name:

aldehyde dehydrogenase 2 family  
(mitochondrial)

Calculated MW:

56 kDa

Observed MW:

50-55 kDa

Purification Method:

Protein A purification

CloneNo.:

251287E9

## Applications

Tested Applications:

WB, IF/ICC, Indirect ELISA

Species Specificity:

human, mouse, rat

## Background Information

Acetaldehyde dehydrogenase is the next enzyme after alcohol dehydrogenase in the major pathway of alcohol metabolism. It mediates NADP<sup>+</sup>-dependent oxidation of aldehydes into acids during detoxification of alcohol-derived acetaldehyde; lipid peroxidation; and metabolism of corticosteroids, biogenic amines and neurotransmitters. Genetic variation in ALDH2 is responsible for individual differences in responses to drinking alcohol. Thus, the absence of this enzyme is linked to alcohol intolerance and a reduced risk for alcoholism-related liver disease.

## Storage

Storage:

Store at -80°C.

**The product is shipped with ice packs. Upon receipt, store it immediately at -80°C**

Storage Buffer:

PBS only, pH7.3

For technical support and original validation data for this product please contact:

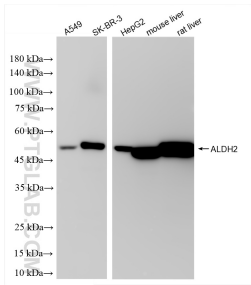
T: 4006900926

E: [Proteintech-CN@ptglab.com](mailto:Proteintech-CN@ptglab.com)

W: [ptgcn.com](http://ptgcn.com)

**This product is exclusively available under Proteintech Group brand and is not available to purchase from any other manufacturer.**

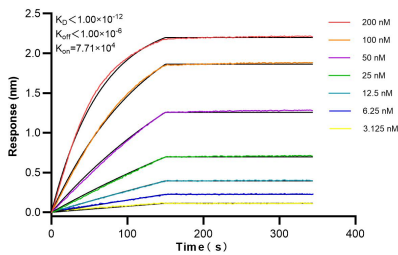
Selected Validation Data



Immunofluorescent analysis of (4% PFA) fixed C2C12 cells using ALDH2 antibody (86429-5-RR, Clone: 251287E9) at dilution of 1:800 and CoraLite®488-Conjugated Goat Anti-Rabbit IgG(H+L) (SA00013-2), CL594-Phalloidin (red). This data was developed using the same antibody clone with 86429-5-PBS in a different storage buffer formulation.

Immunofluorescent analysis of (4% PFA) fixed A549 cells using ALDH2 antibody (86429-5-RR, Clone: 251287E9) at dilution of 1:800 and CoraLite®488-Conjugated Goat Anti-Rabbit IgG(H+L) (SA00013-2), CL594-Phalloidin (red). This data was developed using the same antibody clone with 86429-5-PBS in a different storage buffer formulation.

Various lysates were subjected to SDS PAGE followed by western blot with 86429-5-RR (ALDH2 antibody) at dilution of 1:10000 incubated at room temperature for 1.5 hours. This data was developed using the same antibody clone with 86429-5-PBS in a different storage buffer formulation.



Biolayer interferometry (BLI) kinetic assays of 86429-5-RR against Human ALDH2 were performed. The affinity constant is below 1 pM.