

For Research Use Only

# FGL1 Recombinant antibody

Catalog Number: 86426-2-RR



## Basic Information

Catalog Number:

86426-2-RR

Concentration:

1000 µg/ml

Source:

Rabbit

Isotype:

IgG

Immunogen Catalog Number:

EG2765

GenBank Accession Number:

NM\_004467.4

GeneID (NCBI):

2267

UNIPROT ID:

Q08830

Full Name:

fibrinogen-like 1

Calculated MW:

36 kDa

Observed MW:

36 kDa

Purification Method:

Protein A purification

CloneNo.:

251192B12

Recommended Dilutions:

WB: 1:5000-1:50000

## Applications

Tested Applications:

WB, ELISA

Species Specificity:

human

Positive Controls:

WB : human placenta tissue, HepG2 cells, HCT 116 cells, Ramos cells

## Background Information

FGL1 is a 68 kDa protein that comprises two disulfide linked 34 kDa homodimers. FGL1 is a predominantly liver expressed protein that has been implicated as both a hepatoprotectant and a hepatocyte mitogen. FGL1 expression is decreased in hepatocellular carcinoma (HCC), and it may play a role in the development of hepatocellular carcinomas.

## Storage

Storage:

Store at -20°C. Stable for one year after shipment.

Storage Buffer:

PBS with 0.02% sodium azide and 50% glycerol, pH7.3

Aliquoting is unnecessary for -20°C storage

For technical support and original validation data for this product please contact:

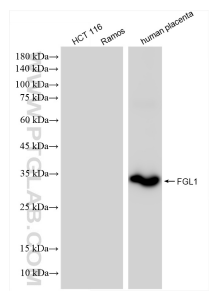
T: 4006900926

E: [Proteintech-CN@ptglab.com](mailto:Proteintech-CN@ptglab.com)

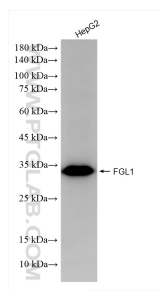
W: [ptgcn.com](http://ptgcn.com)

This product is exclusively available under Proteintech Group brand and is not available to purchase from any other manufacturer.

## Selected Validation Data



Various lysates were subjected to SDS PAGE followed by western blot with 86426-2-RR (FGL1 antibody) at dilution of 1:10000 incubated at room temperature for 1.5 hours.



HepG2 cells were subjected to SDS PAGE followed by western blot with 86426-2-RR (FGL1 antibody) at dilution of 1:10000 incubated at room temperature for 1.5 hours.