

For Research Use Only

# SLFN5 Recombinant antibody

Catalog Number: 86424-1-RR



## Basic Information

Catalog Number:

86424-1-RR

Concentration:

1000 µg/ml

Source:

Rabbit

Isotype:

IgG

Immunogen Catalog Number:

AG9959

GenBank Accession Number:

BC021238

GeneID (NCBI):

162394

UNIPROT ID:

Q08AF3

Full Name:

schlafen family member 5

Calculated MW:

338 aa, 38 kDa

Observed MW:

90-100 kDa

Purification Method:

Protein A purification

CloneNo.:

251214D8

Recommended Dilutions:

WB: 1:5000-1:50000

## Applications

Tested Applications:

WB, ELISA

Species Specificity:

human

Positive Controls:

WB : T-47D cells, SKOV-3 cells, HaCaT cells

## Background Information

Schlafen family member 5 (SLFN5) is a member of the Schlafen family of proteins, a group of type 1 IFN-inducible proteins. In addition to an AAA (ATPase) domain and a specific SLFN box, the SLFN5 gene contains a helicase domain as well as a nuclear localization sequence, which suggests a role for this protein in transcription-related processes. A growing number of findings suggest that human Schlafen family member 5 (SLFN5) plays a key role in malignancy.

## Storage

Storage:

Store at -20°C. Stable for one year after shipment.

Storage Buffer:

PBS with 0.02% sodium azide and 50% glycerol, pH7.3

Aliquoting is unnecessary for -20°C storage

For technical support and original validation data for this product please contact:

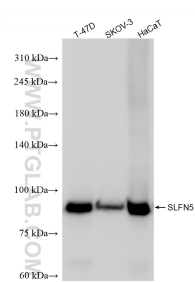
T: 4006900926

E: Proteintech-CN@ptglab.com

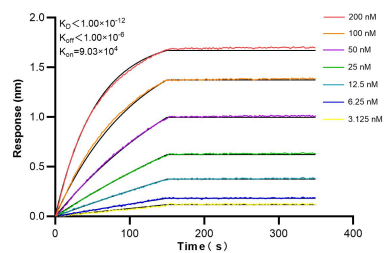
W: ptgcn.com

This product is exclusively available under Proteintech Group brand and is not available to purchase from any other manufacturer.

## Selected Validation Data



Various lysates were subjected to SDS PAGE followed by western blot with 86424-1-RR (SLFN5 antibody) at dilution of 1:10000 incubated at room temperature for 1.5 hours.



Biolayer interferometry (BLI) kinetic assays of 86424-1-RR against Human SLFN5 were performed. The affinity constant is below 1 pM.