

For Research Use Only

Casein Kinase 1 Delta Recombinant antibody, PBS Only

Catalog Number: 86423-2-PBS



Basic Information

| | | |
|-------------------------------------|---------------------------------------|--|
| Catalog Number: 86423-2-PBS | GenBank Accession Number: BC003558 | Purification Method: Protein A purification |
| Concentration: 1 mg/ml | GeneID (NCBI): 1453 | CloneNo.: 251238D11 |
| Source: Rabbit | UNIPROT ID: P48730 | |
| Isotype: IgG | Full Name: casein kinase 1, delta | |
| Immunogen Catalog Number: AG5856 | Calculated MW: 47 kDa | |
| | Observed MW: 47 kDa | |

Applications

Tested Applications:
WB, Indirect ELISA

Species Specificity:
human, mouse

Background Information

CSNK1D(casein kinase I isoform delta) is also named as HCKID, CKId and belongs to the casein kinase I subfamily. CKI is a ubiquitous enzyme which has been found in the cytosol, associated with membranes, and in the nucleus. It can phosphorylate a large number of cytosolic, membrane-associated, and nuclear proteins(PMID:8454611). CSNK1D is found to be associated generally with granulovacuolar bodies and tau-containing neurofibrillary tangles in AD, DS, PSP, PDC, PPND, and controls, and Pick bodies and ballooned neurons in PiD(PMID:10924763). It has 2 isoforms produced by alternative splicing.

Storage

Storage:
Store at -80°C.
The product is shipped with ice packs. Upon receipt, store it immediately at -80°C

Storage Buffer:
PBS only, pH7.3

For technical support and original validation data for this product please contact:

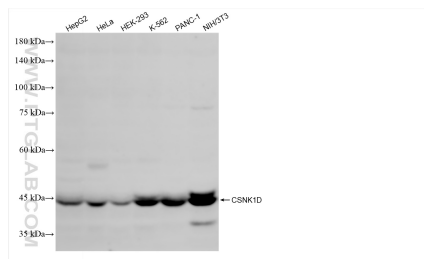
T: 4006900926

E: Proteintech-CN@ptglab.com

W: ptgcn.com

This product is exclusively available under Proteintech Group brand and is not available to purchase from any other manufacturer.

Selected Validation Data



HepG2 cells were subjected to SDS PAGE followed by western blot with 86423-2-RR (CSNK1D antibody) at dilution of 1:1000 incubated at room temperature for 1.5 hours. This data was developed using the same antibody clone with 86423-2-PBS in a different storage buffer formulation.