

For Research Use Only

Mouse SLAMF6 Recombinant antibody, PBS Only

Catalog Number: 86422-1-PBS



Basic Information

Catalog Number: 86422-1-PBS	GenBank Accession Number: NM_030710.2	Purification Method: Protein A purification
Concentration: 1000 µg/ml	GeneID (NCBI): 30925	CloneNo.: 251099E10
Source: Rabbit	UNIPROT ID: Q9ET39-2	
Isotype: IgG	Full Name: SLAM family member 6	
Immunogen Catalog Number: EG5249	Calculated MW: 36 kDa	
	Observed MW: 60 kDa	

Applications

Tested Applications:
WB, IF/ICC, Indirect ELISA

Species Specificity:
mouse

Background Information

Signaling lymphocyte activation molecule 6 (SLAMF6) (Ly108 in mice, NTB-A or SF2000 in humans) is a homophilic receptor belonging to the superfamily immunoglobulin (Ig) domain-containing molecules (PMID:31199820). SLAMF6 is a type I transmembrane protein with two extracellular immunoglobins (Ig)-like domains and three cytoplasmic tyrosine-based signaling motifs, one of which is immunoreceptor tyrosine-based switch motif (PMID:31315913). SLAMF6 is expressed on a wide variety of immune cells including T cells (also TFH), B cells, NK cells (expressed in humans only), double positive thymocytes, eosinophils, and neutrophils (mouse only) (PMID:11862385).

Storage

Storage:
Store at -80°C.

The product is shipped with ice packs. Upon receipt, store it immediately at -80°C

Storage Buffer:
PBS only, pH7.3

For technical support and original validation data for this product please contact:

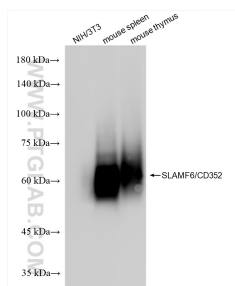
T: 4006900926

E: Proteintech-CN@ptglab.com

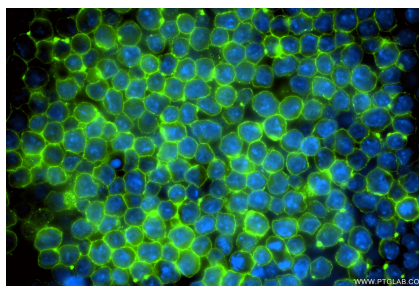
W: ptgcn.com

This product is exclusively available under Proteintech Group brand and is not available to purchase from any other manufacturer.

Selected Validation Data



Various lysates were subjected to SDS PAGE followed by western blot with 86422-1-RR (SLAMF6/CD352 antibody) at dilution of 1:5000 incubated at room temperature for 1.5 hours. This data was developed using the same antibody clone with 86422-1-PBS in a different storage buffer formulation.



Immunofluorescent analysis of (4% PFA) fixed A20 cells using SLAMF6 antibody (86422-1-RR, Clone: 251099E10) at dilution of 1:500 and CoraLite®488-Conjugated Goat Anti-Rabbit IgG(H+L) (SA00013-2). This data was developed using the same antibody clone with 86422-1-PBS in a different storage buffer formulation.