

IL-16 Recombinant monoclonal antibody

Catalog Number: 86421-1-RR

Basic Information

Catalog Number: 86421-1-RR	GenBank Accession Number: NM_010551.3	Purification Method: Protein A purification
Source: Rabbit	GeneID (NCBI): 16170	CloneNo.: 250058G12
Isotype: IgG	UNIPROT ID: O54824-1	Recommended Dilutions: WB: 1:20000-1:100000 IHC: 1:500-1:2000
Immunogen Catalog Number: EG3127	Full Name: interleukin 16	
	Calculated MW: 141 kDa	
	Observed MW: 66-72 kDa	

Applications

Tested Applications: WB, IHC, ELISA	Positive Controls:
Species Specificity: mouse, rat	WB : RAW 264.7 cells, mouse spleen tissue, mouse thymus tissue, rat thymus tissue
Note-IHC: suggested antigen retrieval with TE buffer pH 9.0; (*) Alternatively, antigen retrieval may be performed with citrate buffer pH 6.0	IHC : mouse spleen tissue,

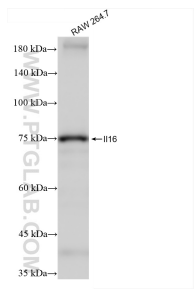
Background Information

IL-16 is a pleiotropic cytokine that functions as a chemoattractant, a modulator of T cell activation, and an inhibitor of HIV replication. It is mainly produced by T lymphocytes but also by other immune cells, neuronal cells, fibroblasts and epithelial cells. The signaling process of this cytokine is mediated by CD4. IL-16 induces chemotaxis of CD4+ cells such as lymphocytes, eosinophils, and dendritic cells by ligating CD4 directly at a site distinct from other ligands. Among its multiple functions, IL-16 is a T cell chemoattractant involved in T helper cell inflammatory responses and the regulation of both T cell growth, and responsiveness to regulatory cytokines. The cytokine function is exclusively attributed to the secreted C-terminal peptide, while the N-terminal product may play a role in cell cycle control. Pro-IL-16 can be detected at about 80 kDa, and cleaved fragments can be detected at between 40 and 75 kDa.

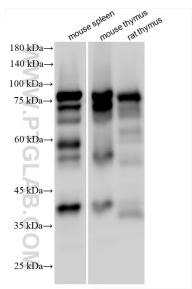
Storage

Storage:
Store at -20°C. Stable for one year after shipment.
Storage Buffer:
PBS with 0.02% sodium azide and 50% glycerol, pH7.3
 Aliquoting is unnecessary for -20°C storage

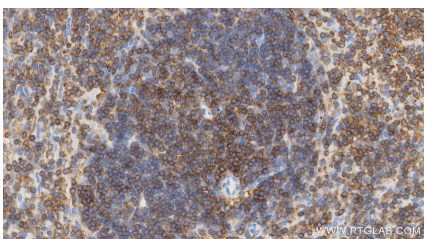
Selected Validation Data



RAW 264.7 cells were subjected to SDS PAGE followed by western blot with 86421-1-RR (IL16 antibody) at dilution of 1:50000 incubated at room temperature for 1.5 hours.



Various lysates were subjected to SDS PAGE followed by western blot with 86421-1-RR (IL16 antibody) at dilution of 1:10000 incubated at room temperature for 1.5 hours.



Immunohistochemical analysis of paraffin-embedded mouse spleen tissue slide using 86421-1-RR (IL-16 antibody) at dilution of 1:1000 (under 40x lens). Heat mediated antigen retrieval with Tris-EDTA buffer (pH 9.0).