

For Research Use Only

# Mouse IL-16 Recombinant monoclonal antibody, PBS Only

Catalog Number: 86421-1-PBS



## Basic Information

Catalog Number:

86421-1-PBS

Source:

Rabbit

Isotype:

IgG

Immunogen Catalog Number:

EG3127

GenBank Accession Number:

NM\_010551.3

GeneID (NCBI):

16170

UNIPROT ID:

O54824-1

Full Name:

interleukin 16

Calculated MW:

141 kDa

Observed MW:

66-72 kDa

Purification Method:

Protein A purification

CloneNo.:

250058G12

## Applications

Tested Applications:

WB, IHC, Indirect ELISA

Species Specificity:

mouse, rat

## Background Information

IL-16 is a pleiotropic cytokine that functions as a chemoattractant, a modulator of T cell activation, and an inhibitor of HIV replication. It is mainly produced by T lymphocytes but also by other immune cells, neuronal cells, fibroblasts and epithelial cells. The signaling process of this cytokine is mediated by CD4. IL-16 induces chemotaxis of CD4+ cells such as lymphocytes, eosinophils, and dendritic cells by ligating CD4 directly at a site distinct from other ligands. Among its multiple functions, IL-16 is a T cell chemoattractant involved in T helper cell inflammatory responses and the regulation of both T cell growth, and responsiveness to regulatory cytokines. The cytokine function is exclusively attributed to the secreted C-terminal peptide, while the N-terminal product may play a role in cell cycle control. Pro-IL-16 can be detected at about 80 kDa, and cleaved fragments can be detected at between 40 and 75 kDa.

## Storage

Storage:

Store at -80°C.

The product is shipped with ice packs. Upon receipt, store it immediately at -80°C

Storage Buffer:

PBS only, pH7.3

For technical support and original validation data for this product please contact:

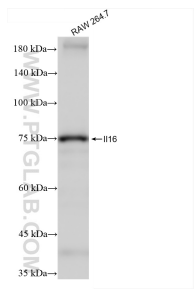
T: 4006900926

E: [Proteintech-CN@ptglab.com](mailto:Proteintech-CN@ptglab.com)

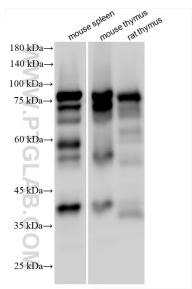
W: [ptgcn.com](http://ptgcn.com)

This product is exclusively available under Proteintech Group brand and is not available to purchase from any other manufacturer.

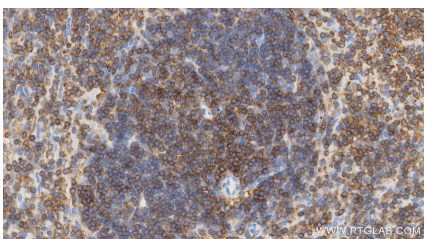
## Selected Validation Data



RAW 264.7 cells were subjected to SDS PAGE followed by western blot with 86421-1-RR (IL16 antibody) at dilution of 1:50000 incubated at room temperature for 1.5 hours. This data was developed using the same antibody clone with 86421-1-PBS in a different storage buffer formulation.



Various lysates were subjected to SDS PAGE followed by western blot with 86421-1-RR (IL16 antibody) at dilution of 1:10000 incubated at room temperature for 1.5 hours. This data was developed using the same antibody clone with 86421-1-PBS in a different storage buffer formulation.



Immunohistochemical analysis of paraffin-embedded mouse spleen tissue slide using 86421-1-RR (IL-16 antibody) at dilution of 1:1000 (under 40x lens). Heat mediated antigen retrieval with Tris-EDTA buffer (pH 9.0). This data was developed using the same antibody clone with 86421-1-PBS in a different storage buffer formulation.