

For Research Use Only

# PADI4 Recombinant antibody, PBS Only (Capture)

Catalog Number: 86419-3-PBS



## Basic Information

<b>Catalog Number:</b> 86419-3-PBS	<b>GenBank Accession Number:</b> BC025718	<b>Purification Method:</b> Protein A purification
<b>Concentration:</b> 1 mg/ml	<b>GeneID (NCBI):</b> 23569	<b>CloneNo.:</b> 250881E11
<b>Source:</b> Rabbit	<b>UNIPROT ID:</b> Q9UM07	
<b>Isotype:</b> IgG	<b>Full Name:</b> peptidyl arginine deiminase, type IV	
<b>Immunogen Catalog Number:</b> AG11339	<b>Calculated MW:</b> 663 aa, 74 kDa	

## Applications

**Tested Applications:**  
Sandwich ELISA, Indirect ELISA, Sample test

**Species Specificity:**  
human

## Background Information

### Storage

**Storage:**  
Store at -80°C.  
**The product is shipped with ice packs. Upon receipt, store it immediately at -80°C**

**Storage Buffer:**  
PBS only, pH7.3

For technical support and original validation data for this product please contact:

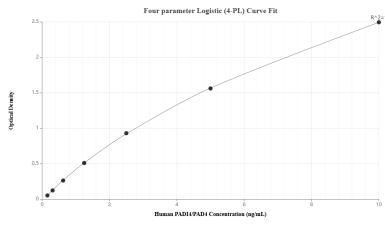
T: 4006900926

E: [Proteintech-CN@ptglab.com](mailto:Proteintech-CN@ptglab.com)

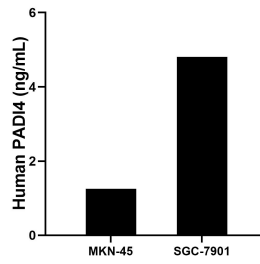
W: [ptgcn.com](http://ptgcn.com)

**This product is exclusively available under Proteintech Group brand and is not available to purchase from any other manufacturer.**

## Selected Validation Data



Sandwich ELISA standard curve of MP02590-1, Human PADI4/PAD4 Recombinant Matched Antibody Pair - PBS only. 86419-3-PBS was coated to a plate as the capture antibody and incubated with serial dilutions of standard Ag11339. 86419-2-PBS was HRP conjugated as the detection antibody. Range: 0.156-10 ng/mL



The mean PADI4/PAD4 concentration was determined to be 1.25 ng/mL in MKN-45 cell extract based on a 2.7 mg/mL extract load and 4.81 ng/mL in SGC-7901 cell extract based on a 1.3 mg/mL extract load.