

For Research Use Only

CHI3L2 Recombinant monoclonal antibody, PBS Only (Capture)

Catalog Number: 86417-3-PBS



Basic Information

| | | |
|---|--|---|
| Catalog Number: 86417-3-PBS | GenBank Accession Number: BC011460 | Purification Method: Protein A purification |
| Source: Rabbit | GeneID (NCBI): 1117 | CloneNo.: 251060H6 |
| Isotype: IgG | UNIPROT ID: Q15782 | |
| Immunogen Catalog Number: AG26386 | Full Name: chitinase 3-like 2 | |
| | Calculated MW: 390 aa, 44 kDa | |

Applications

Tested Applications:
Sandwich ELISA, Indirect ELISA

Species Specificity:
human

Background Information

Storage

Storage:
Store at -80°C.
The product is shipped with ice packs. Upon receipt, store it immediately at -80°C

Storage Buffer:
PBS only, pH7.3

For technical support and original validation data for this product please contact:

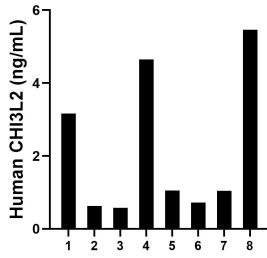
T: 4006900926

E: Proteintech-CN@ptglab.com

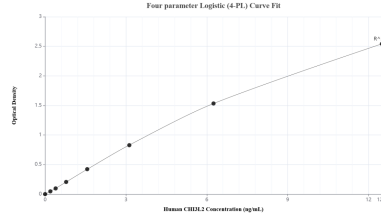
W: ptgcn.com

This product is exclusively available under Proteintech Group brand and is not available to purchase from any other manufacturer.

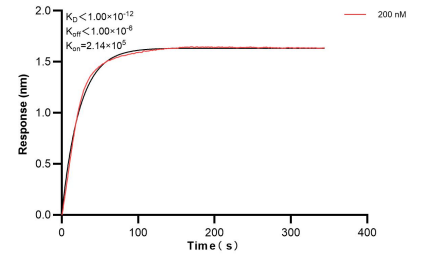
Selected Validation Data



Plasma of eight individual healthy human donors was measured. The CHI3L2 concentration of detected samples was determined to be 2.16 ng/mL with a range of 0.58-5.46 ng/mL.



Sandwich ELISA standard curve of MP02660-1, Human CHI3L2 Recombinant Matched Antibody Pair - PBS only. 86417-3-PBS was coated to a plate as the capture antibody and incubated with serial dilutions of standard Ag26386. 86417-2-PBS was HRP conjugated as the detection antibody. Range: 0.195-12.5 ng/mL.



Bi-layer interferometry (BLI) kinetic assay of 86417-3-PBS against Human CHI3L2 was performed. The affinity constant is below 1 pM.