

For Research Use Only

# CHI3L2 Recombinant monoclonal antibody, PBS Only (Detector)

Catalog Number: 86417-2-PBS



## Basic Information

<b>Catalog Number:</b> 86417-2-PBS	<b>GenBank Accession Number:</b> BC011460	<b>Purification Method:</b> Protein A purification
<b>Source:</b> Rabbit	<b>GeneID (NCBI):</b> 1117	<b>CloneNo.:</b> 251060H3
<b>Isotype:</b> IgG	<b>UNIPROT ID:</b> Q15782	
<b>Immunogen Catalog Number:</b> AG26386	<b>Full Name:</b> chitinase 3-like 2	
	<b>Calculated MW:</b> 390 aa, 44 kDa	

## Applications

**Tested Applications:**  
Sandwich ELISA, Indirect ELISA

**Species Specificity:**  
human

## Background Information

### Storage

**Storage:**  
Store at -80°C.  
**The product is shipped with ice packs. Upon receipt, store it immediately at -80°C**

**Storage Buffer:**  
PBS only, pH7.3

For technical support and original validation data for this product please contact:

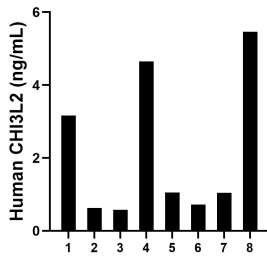
T: 4006900926

E: [Proteintech-CN@ptglab.com](mailto:Proteintech-CN@ptglab.com)

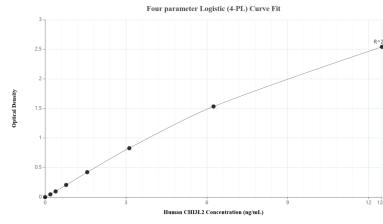
W: [ptgcn.com](http://ptgcn.com)

**This product is exclusively available under Proteintech Group brand and is not available to purchase from any other manufacturer.**

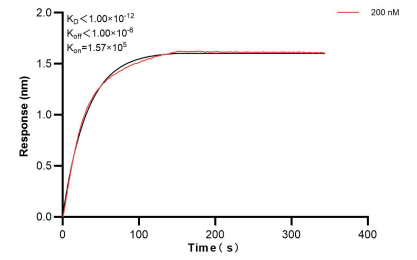
## Selected Validation Data



Plasma of eight individual healthy human donors was measured. The CHI3L2 concentration of detected samples was determined to be 2.16 ng/mL with a range of 0.58-5.46 ng/mL.



Sandwich ELISA standard curve of MP02660-1, Human CHI3L2 Recombinant Matched Antibody Pair - PBS only. 86417-3-PBS was coated to a plate as the capture antibody and incubated with serial dilutions of standard Ag26386. 86417-2-PBS was HRP conjugated as the detection antibody. Range: 0.195-12.5 ng/mL.



Bi-layer interferometry (BLI) kinetic assay of 86417-2-PBS against Human CHI3L2 was performed. The affinity constant is below 1 pM.