

For Research Use Only

SP-D/SFTPD Recombinant monoclonal antibody, PBS Only (Detector)

Catalog Number: 86416-3-PBS



Basic Information

Catalog Number:

86416-3-PBS

Concentration:

1 mg/ml

Source:

Rabbit

Isotype:

IgG

Immunogen Catalog Number:

EG4996

GenBank Accession Number:

NM_003019.5

GeneID (NCBI):

6441

UNIPROT ID:

P35247

Full Name:

surfactant protein D

Calculated MW:

38 kDa

Purification Method:

Protein A purification

CloneNo.:

250947D9

Applications

Tested Applications:

Sandwich ELISA, Indirect ELISA

Species Specificity:

human

Background Information

Storage

Storage:

Store at -80°C.

The product is shipped with ice packs. Upon receipt, store it immediately at -80°C

Storage Buffer:

PBS only, pH7.3

For technical support and original validation data for this product please contact:

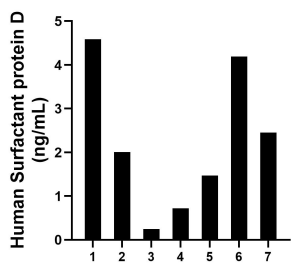
T: 4006900926

E: Proteintech-CN@ptglab.com

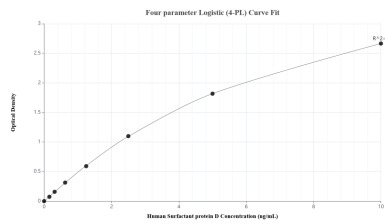
W: ptgcn.com

This product is exclusively available under Proteintech Group brand and is not available to purchase from any other manufacturer.

Selected Validation Data



Plasma of seven individual healthy human donors was measured. The Surfactant protein D concentration of detected samples was determined to be 2.24 ng/mL with a range of 0.25-4.59 ng/mL.



Sandwich ELISA standard curve of MP02661-1, Human Surfactant protein D Recombinant Matched Antibody Pair - PBS only. 86416-4-PBS was coated to a plate as the capture antibody and incubated with serial dilutions of standard Eg4996. 86416-3-PBS was HRP conjugated as the detection antibody. Range: 0.156-10 ng/mL.