

For Research Use Only

Mouse Gdf2 Recombinant antibody, PBS Only (Detector)

Catalog Number: 86411-2-PBS



Basic Information

Catalog Number:

86411-2-PBS

Concentration:

1 mg/ml

Source:

Rabbit

Isotype:

IgG

Immunogen Catalog Number:

EG2482

GenBank Accession Number:

NM_019506.4

GeneID (NCBI):

12165

UNIPROT ID:

Q9WV56

Full Name:

growth differentiation factor 2

Calculated MW:

48 kDa

Purification Method:

Protein A purification

CloneNo.:

250512G11

Applications

Tested Applications:

Sandwich ELISA, Indirect ELISA, Sample test

Species Specificity:

mouse

Background Information

Storage

Storage:

Store at -80°C.

The product is shipped with ice packs. Upon receipt, store it immediately at -80°C

Storage Buffer:

PBS only, pH7.3

For technical support and original validation data for this product please contact:

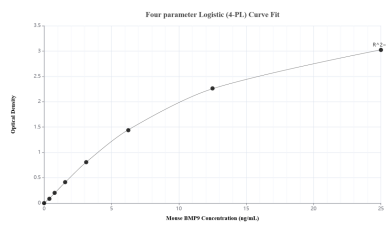
T: 4006900926

E: Proteintech-CN@ptglab.com

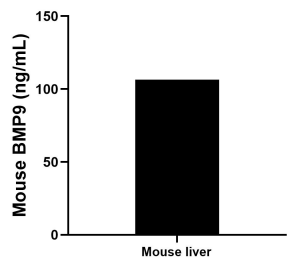
W: ptgcn.com

This product is exclusively available under Proteintech Group brand and is not available to purchase from any other manufacturer.

Selected Validation Data



Sandwich ELISA standard curve of MP02608-1, Mouse BMP9 Recombinant Matched Antibody Pair - PBS only. 86411-1-PBS was coated to a plate as the capture antibody and incubated with serial dilutions of standard Eg2482. 86411-2-PBS was HRP conjugated as the detection antibody. Range: 0.391-25 ng/mL.



The mean BMP9 concentration was determined to be 106.40 ng/mL in mouse liver tissue extract based on a 8.40 mg/mL extract load.