

For Research Use Only

Mouse BMP9 Recombinant monoclonal antibody, PBS Only (Capture)

Catalog Number: 86411-1-PBS



Basic Information

| | | | | | |
|---------------------------|-------------|---------------------------|---------------------------------|----------------------|------------------------|
| Catalog Number: | 86411-1-PBS | GenBank Accession Number: | NM_019506.4 | Purification Method: | Protein A purification |
| Concentration: | 1000 µg/ml | GeneID (NCBI): | 12165 | CloneNo.: | 250512B9 |
| Source: | Rabbit | UNIPROT ID: | Q9WV56 | | |
| Isotype: | IgG | Full Name: | growth differentiation factor 2 | | |
| Immunogen Catalog Number: | EG2482 | Calculated MW: | 48 kDa | | |
| | | Observed MW: | 33 kDa | | |

Applications

Tested Applications:
WB, Sandwich ELISA, Indirect ELISA

Species Specificity:
human, mouse, rat, pig

Background Information

Bone morphogenetic protein-9 (BMP9, also termed growth-differentiation factor-2, GDF-2) is a secreted signaling molecule that belongs to the transforming growth factor- β (TGF- β) super-family. First identified in fetal mouse liver cDNA libraries, BMP9 is predominantly produced by hepatic stellate cells and circulates at relatively high concentrations in adult plasma. BMP9 is synthesized as a precursor protein (pre-proBMP9) composed of 429 amino acids (aa) that includes a 22 aa signal peptide, a 297 aa prodomain (33 kDa) and a 110 aa mature protein (12.5 kDa). It is then cleaved by serine endoproteases, leading to a short dimeric mature form of 25 kDa, and the prodomain which can remain noncovalently associated with the mature short form, giving a size of about 100 kDa (PMID:21710321).

Storage

Storage:
Store at -80°C.
The product is shipped with ice packs. Upon receipt, store it immediately at -80°C

Storage Buffer:
PBS only, pH7.3

For technical support and original validation data for this product please contact:

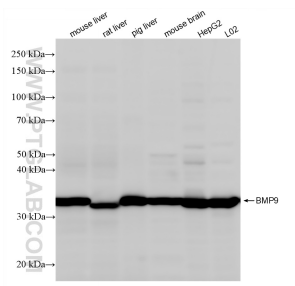
T: 4006900926

E: Proteintech-CN@ptglab.com

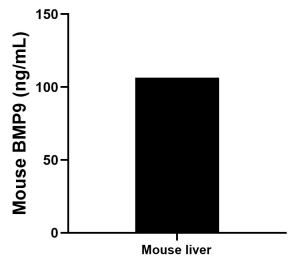
W: ptgcn.com

This product is exclusively available under Proteintech Group brand and is not available to purchase from any other manufacturer.

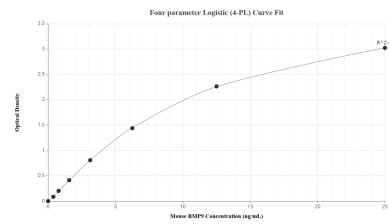
Selected Validation Data



Various lysates were subjected to SDS PAGE followed by western blot with 86411-1-RR (Gdf2 antibody) at dilution of 1:2000 incubated at room temperature for 1.5 hours. This data was developed using the same antibody clone with 86411-1-PBS in a different storage buffer formulation.



The mean BMP9 concentration was determined to be 106.40 ng/mL in mouse liver tissue extract based on a 8.40 mg/mL extract load.



Sandwich ELISA standard curve of MP02608-1, Mouse BMP9 Recombinant Matched Antibody Pair - PBS only. 86411-1-PBS was coated to a plate as the capture antibody and incubated with serial dilutions of standard Eg2482. 86411-2-PBS was HRP conjugated as the detection antibody. Range: 0.391-25 ng/mL