

For Research Use Only

# DLK1 Recombinant antibody, PBS Only (Detector)

Catalog Number: 86410-4-PBS



## Basic Information

Catalog Number: 86410-4-PBS	GenBank Accession Number: NM_003836.6	Purification Method: Protein A purification
Concentration: 1 mg/ml	GeneID (NCBI): 8788	CloneNo.: 250840C6
Source: Rabbit	UNIPROT ID: P80370-1	
Isotype: IgG	Full Name: delta-like 1 homolog (Drosophila)	
Immunogen Catalog Number: EG2909	Calculated MW: 41 kDa	

## Applications

Tested Applications:  
Sandwich ELISA, Indirect ELISA, Sample test

Species Specificity:  
human

## Background Information

### Storage

Storage:  
Store at -80°C.  
The product is shipped with ice packs. Upon receipt, store it immediately at -80°C

Storage Buffer:  
PBS only, pH7.3

For technical support and original validation data for this product please contact:

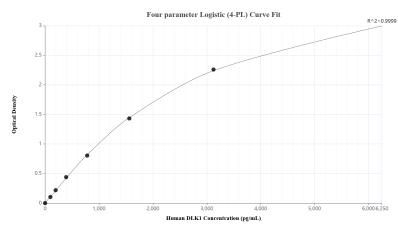
T: 4006900926

E: [Proteintech-CN@ptglab.com](mailto:Proteintech-CN@ptglab.com)

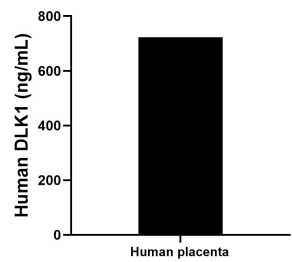
W: [ptgcn.com](http://ptgcn.com)

This product is exclusively available under Proteintech Group brand and is not available to purchase from any other manufacturer.

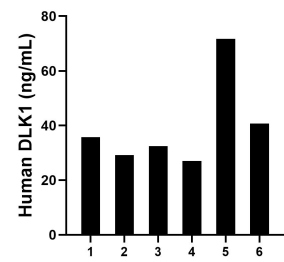
## Selected Validation Data



Sandwich ELISA standard curve of MP02426-2, Human DLK1 Recombinant Matched Antibody Pair - PBS only. 86410-3-PBS was coated to a plate as the capture antibody and incubated with serial dilutions of standard Eg2909. 86410-4-PBS was HRP conjugated as the detection antibody. Range: 97.7-6250 pg/mL



The mean DLK1 concentration was determined to be 722.26 ng/mL in human placenta tissue extract based on a 3.80 mg/mL extract load.



Plasma of six individual healthy human donors was measured. The DLK1 concentration of detected samples was determined to be 39.48 ng/mL with a range of 27.08-71.70 ng/mL.