

For Research Use Only

# MSTN Recombinant monoclonal antibody, PBS Only (Detector)

Catalog Number: 86408-2-PBS



## Basic Information

Catalog Number:

86408-2-PBS

Concentration:

1 mg/ml

Source:

Rabbit

Isotype:

IgG

Immunogen Catalog Number:

EG1972

GenBank Accession Number:

BC074757

GeneID (NCBI):

2660

UNIPROT ID:

O14793

Full Name:

myostatin

Calculated MW:

375 aa, 43 kDa

Purification Method:

Protein A purification

CloneNo.:

250547D4

## Applications

Tested Applications:

Cytometric bead array, Sandwich ELISA, Indirect ELISA

Species Specificity:

human

## Background Information

### Storage

Storage:

Store at -80°C.

The product is shipped with ice packs. Upon receipt, store it immediately at -80°C

Storage Buffer:

PBS only, pH7.3

For technical support and original validation data for this product please contact:

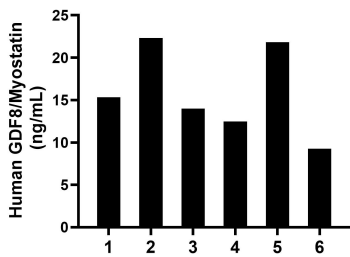
T: 4006900926

E: [Proteintech-CN@ptglab.com](mailto:Proteintech-CN@ptglab.com)

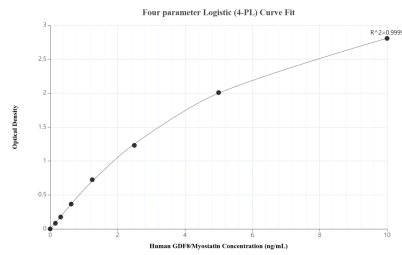
W: [ptgcn.com](http://ptgcn.com)

This product is exclusively available under Proteintech Group brand and is not available to purchase from any other manufacturer.

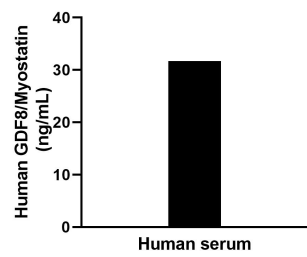
## Selected Validation Data



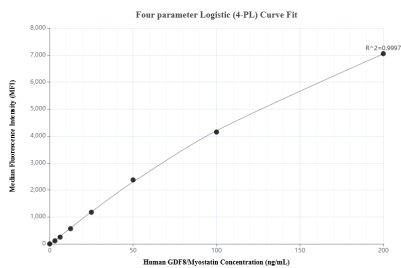
Plasma of six individual healthy human donors was measured. The GDF8/Myostatin concentration of detected samples was determined to be 15.87 ng/mL with a range of 9.27-22.32 ng/mL.



Sandwich ELISA standard curve of MP02424-1, Human GDF8/Myostatin Recombinant Matched Antibody Pair - PBS only. 86408-1-PBS was coated to a plate as the capture antibody and incubated with serial dilutions of standard Eg1972. 86408-2-PBS was HRP conjugated as the detection antibody. Range: 0.156-10 ng/mL.



The mean GDF8/Myostatin concentration was determined to be 32.1 ng/mL in human serum.



Cytometric bead array standard curve of MP02424-1, GDF8/Myostatin Recombinant Matched Antibody Pair, PBS Only. Capture antibody: 86408-1-PBS. Detection antibody: 86408-2-PBS. Standard: Eg1972. Range: 3.125-200 ng/mL.