

For Research Use Only

# MBD2 Recombinant antibody

Catalog Number: 86393-3-RR



## Basic Information

Catalog Number:

86393-3-RR

Concentration:

1000 µg/ml

Source:

Rabbit

Isotype:

IgG

GenBank Accession Number:

NM\_003927

GeneID (NCBI):

8932

UNIPROT ID:

Q9UBB5

Full Name:

methyl-CpG binding domain protein 2

Calculated MW:

43 kDa

Observed MW:

43-50 kDa

Purification Method:

Protein A purification

CloneNo.:

250339G9

Recommended Dilutions:

WB: 1:1000-1:4000

## Applications

Tested Applications:

WB, ELISA

Species Specificity:

human, mouse

Positive Controls:

WB : A431 cells, HEK-293 cells, HL-60 cells, U266 cells, Jurkat cells, NIH/3T3 cells, RAW 264.7 cells

## Background Information

MBD2, also named as DMTase, binds CpG islands in promoters where the DNA is methylated at position 5 of cytosine within CpG dinucleotides. MBD2 binds hemi-methylated DNA as well. It recruits histone deacetylases and DNA methyltransferases. MBD2 acts as transcriptional repressor and plays a role in gene silencing (PMID:9774669). MBD2 belongs to a highly conserved member of the MBD protein family, is considered a reader of DNA methylation and drives the crosstalk between DNA methylation and histone deacetylation (PMID: 40089655). MBD2 drives breast cancer progression through the modulation of epithelial-to-mesenchymal transition (PMID: 38556549).

## Storage

Storage:

Store at -20°C. Stable for one year after shipment.

Storage Buffer:

PBS with 0.02% sodium azide and 50% glycerol, pH7.3

Aliquoting is unnecessary for -20°C storage

For technical support and original validation data for this product please contact:

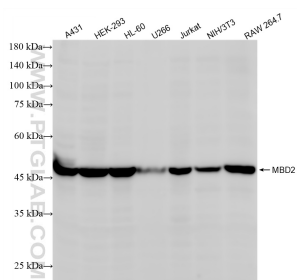
T: 4006900926

E: [Proteintech-CN@ptglab.com](mailto:Proteintech-CN@ptglab.com)

W: [ptgcn.com](http://ptgcn.com)

This product is exclusively available under Proteintech Group brand and is not available to purchase from any other manufacturer.

## Selected Validation Data



Various lysates were subjected to SDS PAGE followed by western blot with 86393-3-RR (MBD2 antibody) at dilution of 1:2000 incubated at room temperature for 1.5 hours.