

For Research Use Only

MBD2 Recombinant antibody, PBS Only (Detector)

Catalog Number: 86393-1-PBS



Basic Information

Catalog Number: 86393-1-PBS	GenBank Accession Number: NM_003927	Purification Method: Protein A purification
Concentration: 1 mg/ml	GeneID (NCBI): 8932	CloneNo.: 250339D8
Source: Rabbit	UNIPROT ID: Q9UBB5	
Isotype: IgG	Full Name: methyl-CpG binding domain protein 2	
	Calculated MW: 43 kDa	

Applications

Tested Applications:
Sandwich ELISA, Indirect ELISA, Sample test

Species Specificity:
human

Background Information

Storage

Storage:
Store at -80°C.
The product is shipped with ice packs. Upon receipt, store it immediately at -80°C

Storage Buffer:
PBS only, pH7.3

For technical support and original validation data for this product please contact:

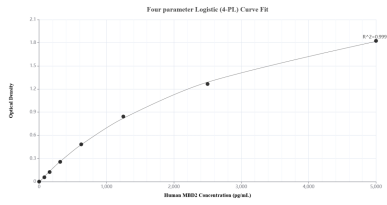
T: 4006900926

E: Proteintech-CN@ptglab.com

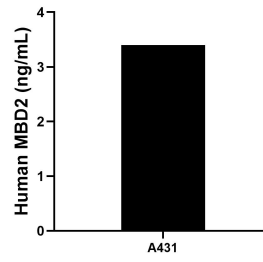
W: ptgcn.com

This product is exclusively available under Proteintech Group brand and is not available to purchase from any other manufacturer.

Selected Validation Data



Sandwich ELISA standard curve of MP02387-1, Human MBD2 Recombinant Matched Antibody Pair - PBS only. 86393-2-PBS was coated to a plate as the capture antibody and incubated with serial dilutions of standard SY01263. 86393-1-PBS was HRP conjugated as the detection antibody. Range: 78.1-5000 pg/mL.



The mean MBD2 concentration was determined to be 3.4 ng/mL in A431 cell extract based on a 3.7 mg/mL extract load.