

For Research Use Only

AREG Recombinant monoclonal antibody, PBS Only (Capture)

Catalog Number: 86387-3-PBS



Basic Information

| | | |
|--|---|---|
| Catalog Number: 86387-3-PBS | GenBank Accession Number: NM_001657.3 | Purification Method: Protein A purification |
| Source: Rabbit | GeneID (NCBI): 374 | CloneNo.: 250996B2 |
| Isotype: IgG | UNIPROT ID: P15514 | |
| Immunogen Catalog Number: EG4569 | Full Name: amphiregulin | |
| | Calculated MW: 28 kDa | |

Applications

Tested Applications:
Sandwich ELISA, Indirect ELISA

Species Specificity:
human

Background Information

Storage

Storage:
Store at -80°C.
The product is shipped with ice packs. Upon receipt, store it immediately at -80°C

Storage Buffer:
PBS only, pH7.3

For technical support and original validation data for this product please contact:

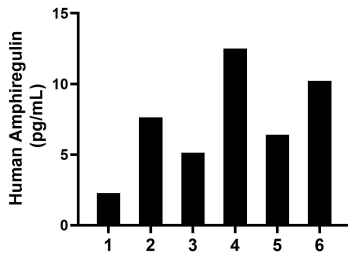
T: 4006900926

E: Proteintech-CN@ptglab.com

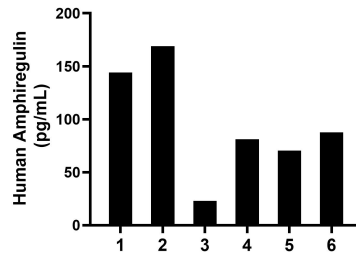
W: ptgcn.com

This product is exclusively available under Proteintech Group brand and is not available to purchase from any other manufacturer.

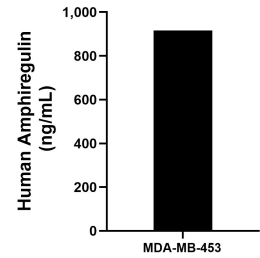
Selected Validation Data



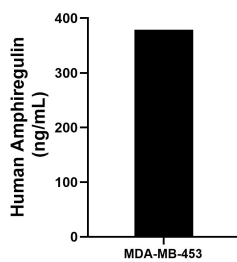
Urine of six individual healthy human donors was measured. The Amphiregulin concentration of detected samples was determined to be 7.4 ng/mL with a range of 2.3-12.5 ng/mL.



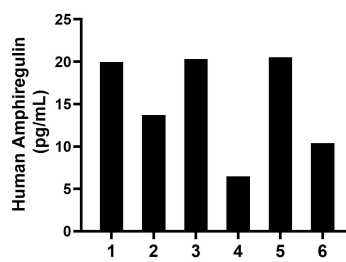
Saliva of six individual healthy human donors was measured. The Amphiregulin concentration of detected samples was determined to be 95.9 ng/mL with a range of 22.9-168.9 ng/mL.



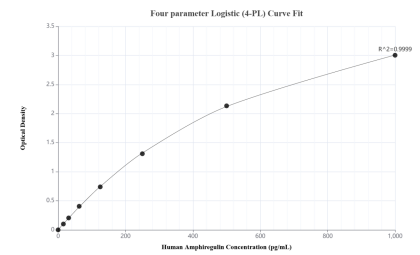
MDA-MB-453 were cultured in DMEM supplemented with 10% fetal bovine serum, 2.5 mM L-glutamine, 100 U/mL penicillin, and 100 µg/mL streptomycin sulfate. An aliquot of the cell culture supernatant was removed, assayed for human Amphiregulin, and measured 915.6 pg/mL.



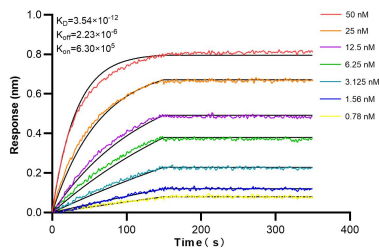
The mean Amphiregulin concentration was determined to be 378.9 ng/mL in MDA-MB-453 cell extract based on a 1.8 mg/mL extract load.



Plasma of eight individual healthy human donors was measured. The Amphiregulin concentration of detected samples was determined to be 15.22 pg/mL with a range of 6.47-20.52 pg/mL.



Sandwich ELISA standard curve of MP02406-2, Human Amphiregulin Recombinant Matched Antibody Pair - PBS only. 86387-3-PBS was coated to a plate as the capture antibody and incubated with serial dilutions of standard Eg4569. 86387-1-PBS was HRP conjugated as the detection antibody. Range: 15.6-1000 pg/mL.



Biolayer interferometry (BLI) kinetic assays of 86387-3-PBS against Human AREG were performed. The affinity constant is 3.54 pM.

Biolayer interferometry (BLI) kinetic assays of 86387-3-RR against Human AREG were performed. The affinity constant is 3.54 pM.