

For Research Use Only

Mouse Igfbp1 Recombinant antibody, PBS Only (Detector)

Catalog Number:86385-4-PBS



Basic Information

Catalog Number: 86385-4-PBS	GenBank Accession Number: NM_008341.4	Purification Method: Protein A purification
Concentration: 1 mg/ml	GeneID (NCBI): 16006	CloneNo.: 250310E11
Source: Rabbit	UNIPROT ID: P47876	
Isotype: IgG	Full Name: insulin-like growth factor binding protein 1	
Immunogen Catalog Number: EG2934	Calculated MW: 30 kDa	

Applications

Tested Applications:
Sandwich ELISA, Indirect ELISA, Sample test

Species Specificity:
mouse

Background Information

Storage

Storage:
Store at -80°C.
The product is shipped with ice packs. Upon receipt, store it immediately at -80°C

Storage Buffer:
PBS only, pH7.3

For technical support and original validation data for this product please contact:

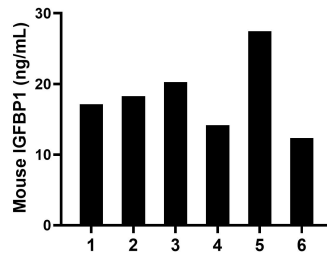
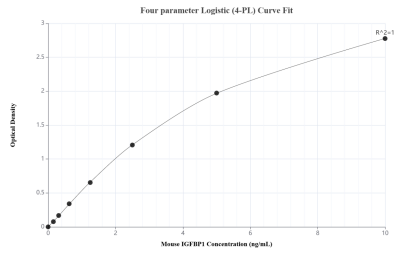
T: 4006900926

E: Proteintech-CN@ptglab.com

W: ptgcn.com

This product is exclusively available under Proteintech Group brand and is not available to purchase from any other manufacturer.

Selected Validation Data



Sandwich ELISA standard curve of MP02401-2, Mouse IGFBP1 Recombinant Matched Antibody Pair - PBS only. 86385-5-PBS was coated to a plate as the capture antibody and incubated with serial dilutions of standard Eg2934. 86385-4-PBS was HRP conjugated as the detection antibody. Range: 0.156-10 ng/mL

Serum of six mice was measured. The IGFBP1 concentration of detected samples was determined to be 18.27 ng/mL with a range of 12.34-27.45 ng/mL