

For Research Use Only

CDCA2 Recombinant monoclonal antibody, PBS Only

Catalog Number: 86379-1-PBS



Basic Information

Catalog Number:

86379-1-PBS

Source:

Rabbit

Isotype:

IgG

Immunogen Catalog Number:

AG11967

GenBank Accession Number:

BC036214

GeneID (NCBI):

157313

UNIPROT ID:

Q69YH5

Full Name:

cell division cycle associated 2

Calculated MW:

113 kDa

Observed MW:

140 kDa

Purification Method:

Protein A purification

CloneNo.:

250980D8

Applications

Tested Applications:

WB, IHC, IF/ICC, Indirect ELISA

Species Specificity:

human

Background Information

Cell division cycle associated 2 (CDCA2) is a nuclear protein that is a specific regulatory subunit for protein phosphatase 1 γ (PP1 γ). CDCA2 is a candidate factor involved in preparing mitotic chromatin for the transition to interphase, and controls PP1 γ -dependent essential DDR regulation. CDCA2 regulates the DNA damage response (DDR) in cell cycle. In addition, CDCA2 modulates phosphorylation of major mitotic histone H3 in a PP1-dependent manner.

Storage

Storage:

Store at -80°C.

The product is shipped with ice packs. Upon receipt, store it immediately at -80°C

Storage Buffer:

PBS only, pH7.3

For technical support and original validation data for this product please contact:

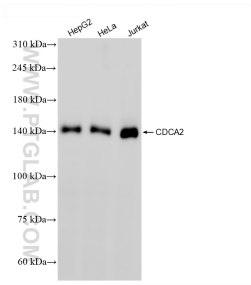
T: 4006900926

E: Proteintech-CN@ptglab.com

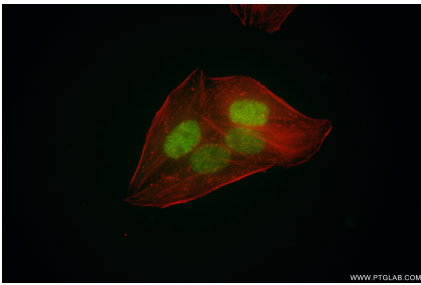
W: ptgcn.com

This product is exclusively available under Proteintech Group brand and is not available to purchase from any other manufacturer.

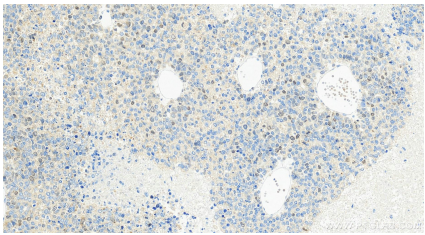
Selected Validation Data



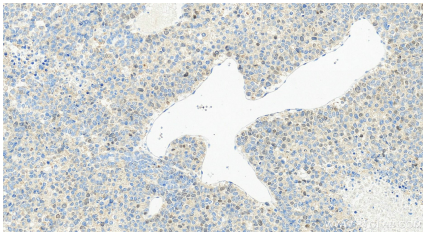
Various lysates were subjected to SDS PAGE followed by western blot with 86379-1-RR (CDCA2 antibody) at dilution of 1:1000 incubated at room temperature for 1.5 hours. This data was developed using the same antibody clone with 86379-1-PBS in a different storage buffer formulation.



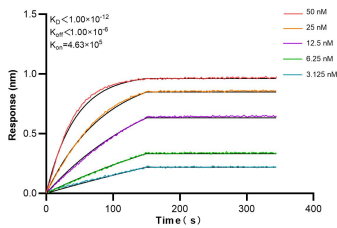
Immunofluorescent analysis of (4% PFA) fixed HepG2 cells using CDCA2 antibody (86379-1-RR, Clone: 250980D8) at dilution of 1:1000 and Coralite® 488-Conjugated Goat Anti-Rabbit IgG(H+L) (SA00013-2), CL594-Phalloidin (red). This data was developed using the same antibody clone with 86379-1-PBS in a different storage buffer formulation.



Immunohistochemical analysis of paraffin-embedded Hepatocellular carcinoma tissue slide using 86379-1-RR (CDCA2 antibody) at dilution of 1:400 (under 20x lens). Heat mediated antigen retrieval with Tris-EDTA buffer (pH 9.0). This data was developed using the same antibody clone with 86379-1-PBS in a different storage buffer formulation.



Immunohistochemical analysis of paraffin-embedded Hepatocellular carcinoma tissue slide using 86379-1-RR (CDCA2 antibody) at dilution of 1:400 (under 20x lens). Heat mediated antigen retrieval with Tris-EDTA buffer (pH 9.0). This data was developed using the same antibody clone with 86379-1-PBS in a different storage buffer formulation.



Biolayer interferometry (BLI) kinetic assays of 86379-1-RR against Human CDCA2 were performed. The affinity constant is below 1 pM.