

For Research Use Only

GLDC Recombinant antibody, PBS Only

Catalog Number: 86378-1-PBS



Basic Information

Catalog Number:

86378-1-PBS

Concentration:

1 mg/ml

Source:

Rabbit

Isotype:

IgG

Immunogen Catalog Number:

AG20410

GenBank Accession Number:

BC111995

GeneID (NCBI):

2731

UNIPROT ID:

P23378

Full Name:

glycine dehydrogenase
(decarboxylating)

Calculated MW:

1020 aa, 113 kDa

Observed MW:

113 kDa

Purification Method:

Protein A purification

CloneNo.:

250916A5

Applications

Tested Applications:

WB, Indirect ELISA

Species Specificity:

human, mouse, rat, monkey

Background Information

GLDC (Glycine dehydrogenase [decarboxylating], mitochondrial) is also named as GCSP and belongs to the GcvP family. It induces dramatic changes in glycolysis and glycine/serine metabolism that leads to changes in pyrimidine metabolism to regulate cancer cell proliferation (PMID:22225612).

Storage

Storage:

Store at -80°C.

The product is shipped with ice packs. Upon receipt, store it immediately at -80°C

Storage Buffer:

PBS only, pH7.3

For technical support and original validation data for this product please contact:

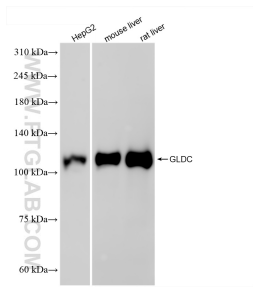
T: 4006900926

E: Proteintech-CN@ptglab.com

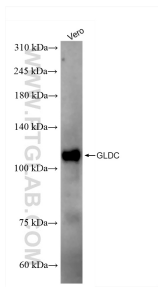
W: ptgcn.com

This product is exclusively available under Proteintech Group brand and is not available to purchase from any other manufacturer.

Selected Validation Data



Various lysates were subjected to SDS PAGE followed by western blot with 86378-1-RR (GLDC antibody) at dilution of 1:10000 incubated at room temperature for 1.5 hours. This data was developed using the same antibody clone with 86378-1-PBS in a different storage buffer formulation.



Vero cells were subjected to SDS PAGE followed by western blot with 86378-1-RR (GLDC antibody) at dilution of 1:10000 incubated at room temperature for 1.5 hours. This data was developed using the same antibody clone with 86378-1-PBS in a different storage buffer formulation.