

For Research Use Only

G-CSF Recombinant antibody, PBS Only (Detector)

Catalog Number: 86376-2-PBS



Basic Information

Catalog Number:

86376-2-PBS

Concentration:

1 mg/ml

Source:

Rabbit

Isotype:

IgG

Immunogen Catalog Number:

HZ-1207

GenBank Accession Number:

GeneID (NCBI):

1440

UNIPROT ID:

P09919

Full Name:

colony stimulating factor 3
(granulocyte)

Purification Method:

Protein A purification

CloneNo.:

250389A8

Applications

Tested Applications:

Sandwich ELISA, Indirect ELISA, Sample test

Species Specificity:

human

Background Information

Storage

Storage:

Store at -80°C.

The product is shipped with ice packs. Upon receipt, store it immediately at -80°C

Storage Buffer:

PBS only, pH7.3

For technical support and original validation data for this product please contact:

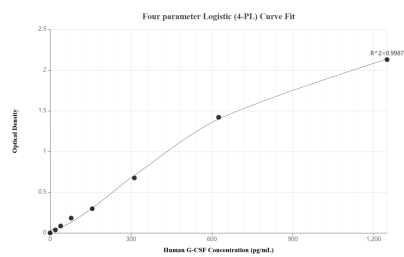
T: 4006900926

E: Proteintech-CN@ptglab.com

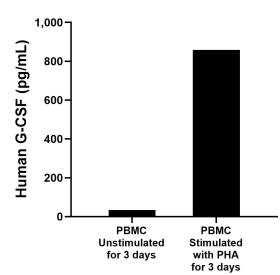
W: ptgcn.com

This product is exclusively available under Proteintech Group brand and is not available to purchase from any other manufacturer.

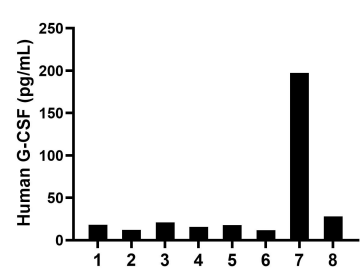
Selected Validation Data



Sandwich ELISA standard curve of MP02556-1, Human G-CSF Recombinant Matched Antibody Pair - PBS only. 86376-1-PBS was coated to a plate as the capture antibody and incubated with serial dilutions of standard HZ-1207. 86376-2-PBS was HRP conjugated as the detection antibody. Range: 19.5-1250 pg/mL



Human peripheral blood mononuclear cells (PBMC) were cultured unstimulated or stimulated with 10 μ g/mL PHA for 3 days. The mean G-CSF concentration was determined to be 33.9 pg/mL in unstimulated PBMC supernatant, 858.2 pg/mL in PHA stimulated PBMC supernatant.



Serum of eight individual healthy human donors was measured. The G-CSF concentration of detected samples was determined to be 40.3 pg/mL with a range of 11.8-197.6 pg/mL