

# G-CSF Recombinant monoclonal antibody

Catalog Number: 86376-1-RR

## Basic Information

**Catalog Number:**

86376-1-RR

**Source:**

Rabbit

**Isotype:**

IgG

**Immunogen Catalog Number:**

HZ-1207

**GenBank Accession Number:****GeneID (NCBI):**

1440

**UNIPROT ID:**

P09919

**Full Name:**colony stimulating factor 3  
(granulocyte)**Observed MW:**

20 kDa

**Purification Method:**

Protein A purification

**CloneNo.:**

250389H1

**Recommended Dilutions:**

WB: 1:1000-1:4000

IF/ICC: 1:50-1:500

FC (Intra): 0.25 ug per 10<sup>6</sup> cells in a  
100 µl suspension

## Applications

**Tested Applications:**

WB, IF/ICC, FC (Intra), ELISA

**Species Specificity:**

human

**Positive Controls:**WB : HeLa cells, HepG2 cells, K-562 cells, MCF-7 cells,  
MOLT-4 cells, A549 cells

IF/ICC : K-562 cells,

FC (Intra) : K-562 cells,

## Background Information

Granulocyte colony-stimulating factor (G-CSF), also referred to as CSF3, is a protective cytokine with anti-inflammatory effects. G-CSF is important in promoting survival of the granulocytic lineage cells and proliferation and migration of neutrophils as well as trophoblast cells. G-CSF acts by binding to its receptor G-CSFR (also called CSF3R), which after binding with G-CSF activates the canonical Janus kinase (Jak)/signal transducer, activator of transcription (STAT) and Ras/Raf/MAP kinase pathways. G-CSF potently stimulates the proliferation and release of peripheral blood progenitor cells into the bloodstream and is therefore used to treat neutropenia after chemotherapy. Furthermore, G-CSF levels are elevated upon intensive exercise leading to increased neutrophil counts, which are predominantly due to delayed neutrophil apoptosis.

## Storage

**Storage:**

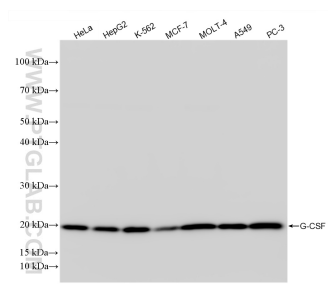
Store at -20°C. Stable for one year after shipment.

**Storage Buffer:**

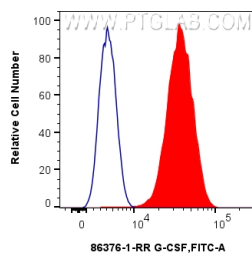
PBS with 0.02% sodium azide and 50% glycerol, pH7.3

Aliquoting is unnecessary for -20°C storage

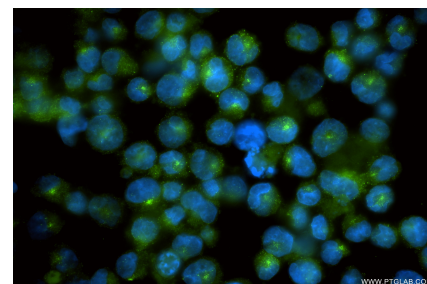
## Selected Validation Data



Various lysates were subjected to SDS PAGE followed by western blot with 86376-1-RR (G-CSF antibody) at dilution of 1:2000 incubated at room temperature for 1.5 hours.



$1 \times 10^6$  K-562 cells were intracellularly stained with 0.25  $\mu$ g G-CSF Recombinant antibody (86376-1-RR, Clone:250389H1) and CoraLite®488-Conjugated Goat Anti-Rabbit IgG(H+L) (SA00013-2) (red), or 0.25  $\mu$ g Rabbit IgG Isotype Control RecAb (98136-1-RR, Clone: 240953C9) (blue). Cells were fixed with 4% PFA and permeabilized with Flow Cytometry Perm Buffer.



Immunofluorescent analysis of (4% PFA) fixed K-562 cells using G-CSF antibody (86376-1-RR, Clone: 250389H1) at dilution of 1:200 and CoraLite®488-Conjugated Goat Anti-Rabbit IgG(H+L) (SA00013-2).