

For Research Use Only

# G-CSF Recombinant monoclonal antibody, PBS Only (Capture)

Catalog Number: 86376-1-PBS



## Basic Information

Catalog Number:	86376-1-PBS	GenBank Accession Number:	Purification Method:
Source:	Rabbit	GeneID (NCBI):	Protein A purification
Isotype:	IgG	1440	CloneNo.:
Immunogen Catalog Number:	HZ-1207	UNIPROT ID:	250389H1
		P09919	
		Full Name:	
		colony stimulating factor 3 (granulocyte)	
		Observed MW:	
		20 kDa	

## Applications

**Tested Applications:**  
WB, IF/ICC, FC (Intra), Sandwich ELISA, Indirect ELISA

**Species Specificity:**  
human

## Background Information

Granulocyte colony-stimulating factor (G-CSF), also referred to as CSF3, is a protective cytokine with anti-inflammatory effects. G-CSF is important in promoting survival of the granulocytic lineage cells and proliferation and migration of neutrophils as well as trophoblast cells. G-CSF acts by binding to its receptor G-CSFR (also called CSF3R), which after binding with G-CSF activates the canonical Janus kinase (Jak)/signal transducer, activator of transcription (STAT) and Ras/Raf/MAP kinase pathways. G-CSF potently stimulates the proliferation and release of peripheral blood progenitor cells into the bloodstream and is therefore used to treat neutropenia after chemotherapy. Furthermore, G-CSF levels are elevated upon intensive exercise leading to increased neutrophil counts, which are predominantly due to delayed neutrophil apoptosis.

## Storage

**Storage:**  
Store at -80°C.  
**The product is shipped with ice packs. Upon receipt, store it immediately at -80°C**  
**Storage Buffer:**  
PBS only, pH7.3

For technical support and original validation data for this product please contact:

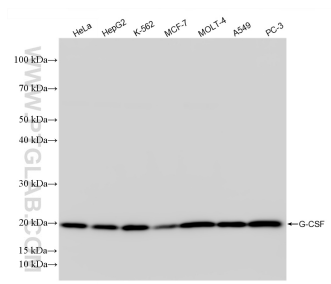
T: 4006900926

E: [Proteintech-CN@ptglab.com](mailto:Proteintech-CN@ptglab.com)

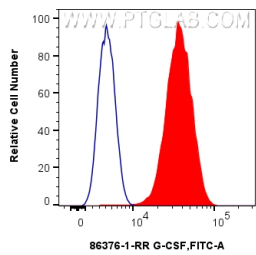
W: [ptgcn.com](http://ptgcn.com)

**This product is exclusively available under Proteintech Group brand and is not available to purchase from any other manufacturer.**

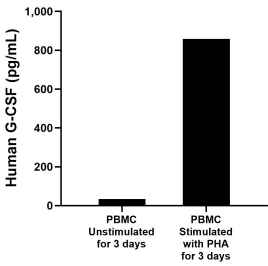
Selected Validation Data



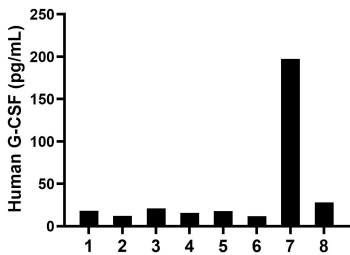
Various lysates were subjected to SDS PAGE followed by western blot with 86376-1-RR (G-CSF antibody) at dilution of 1:2000 incubated at room temperature for 1.5 hours. This data was developed using the same antibody clone with 86376-1-PBS in a different storage buffer formulation.



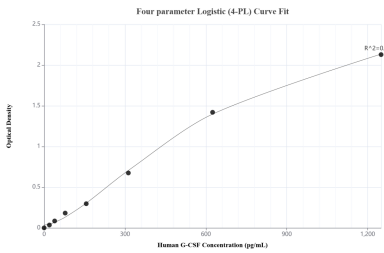
1x10<sup>6</sup> K-562 cells were intracellularly stained with 0.25 ug G-CSF Recombinant antibody (86376-1-RR, Clone:250389H1) and CoraLite®488-Conjugated Goat Anti-Rabbit IgG(H+L) (SA00013-2)(red), or 0.25 ug Rabbit IgG Isotype Control RecAb (98136-1-RR, Clone: 240953C9) (blue). Cells were fixed with 4% PFA and permeabilized with Flow Cytometry Perm Buffer. This data was developed using the same antibody clone with 86376-1-PBS in a different storage buffer formulation.



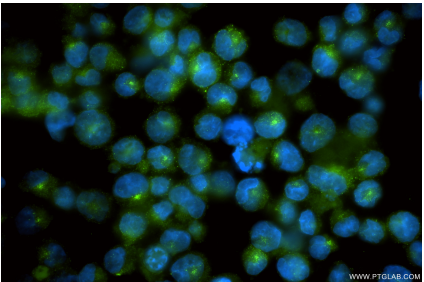
Human peripheral blood mononuclear cells (PBMC) were cultured unstimulated or stimulated with 10 μg/mL PHA for 3 days. The mean G-CSF concentration was determined to be 33.9 pg/mL in unstimulated PBMC supernatant, 858.2 pg/mL in PHA stimulated PBMC supernatant.



Serum of eight individual healthy human donors was measured. The G-CSF concentration of detected samples was determined to be 40.3 pg/mL with a range of 11.8-197.6 pg/mL.



Sandwich ELISA standard curve of MP02556-1, Human G-CSF Recombinant Matched Antibody Pair - PBS only. 86376-1-PBS was coated to a plate as the capture antibody and incubated with serial dilutions of standard HZ-1207. 86376-2-PBS was HRP conjugated as the detection antibody. Range: 19.5-1250 pg/mL.



Immunofluorescent analysis of (4% PFA) fixed K-562 cells using G-CSF antibody (86376-1-RR, Clone: 250389H1) at dilution of 1:200 and CoraLite®488-Conjugated Goat Anti-Rabbit IgG(H+L) (SA00013-2). This data was developed using the same antibody clone with 86376-1-PBS in a different storage buffer formulation.