

For Research Use Only

NR2F6 Recombinant antibody

Catalog Number: 86371-1-RR



Basic Information

Catalog Number: 86371-1-RR	GenBank Accession Number: BC002669	Purification Method: Protein A purification
Concentration: 1000 µg/ml	GeneID (NCBI): 2063	CloneNo.: 251076E2
Source: Rabbit	UNIPROT ID: P10588	Recommended Dilutions: WB: 1:500-1:2000 IF/ICC: 1:250-1:1000
Isotype: IgG	Full Name: nuclear receptor subfamily 2, group F, member 6	
Immunogen Catalog Number: AG7614	Calculated MW: 43 kDa	
	Observed MW: 40-43 kDa	

Applications

Tested Applications: WB, IF/ICC, ELISA	Positive Controls:
Species Specificity: human	WB : HeLa cells, HEK-293T cells IF/ICC : HeLa cells, U2OS cells

Background Information

NR2F6 belongs to NR2F subfamily members, which have their roles in the regulation of neurogenesis, organogenesis, and cellular differentiation during embryonic development (PMID:15875024). NR2F6 acts as transcription factor by binding to a TGACCT direct-repeat motif and has been established in controlling facets of central nervous system (CNS) (PMID: 12690040). It is a nuclear attenuator that directly interferes with DNA binding of NF-AT and, subsequently, transcriptional activity of the NF-AT-dependent IL-17 expression. Otherwise, NR2F6 negatively interfered with transcriptional cytokine responses and acted as a barrier against autoimmunity (PMID:18701084).

Storage

Storage:
Store at -20°C. Stable for one year after shipment.
Storage Buffer:
PBS with 0.02% sodium azide and 50% glycerol, pH7.3
Aliquoting is unnecessary for -20°C storage

For technical support and original validation data for this product please contact:

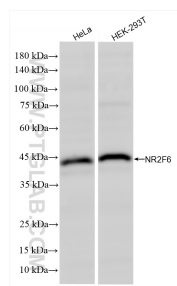
T: 4006900926

E: Proteintech-CN@ptglab.com

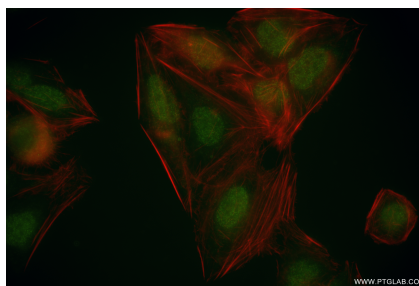
W: ptgcn.com

This product is exclusively available under Proteintech Group brand and is not available to purchase from any other manufacturer.

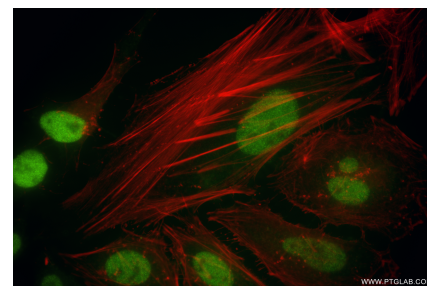
Selected Validation Data



Various lysates were subjected to SDS PAGE followed by western blot with 86371-1-RR (NR2F6 antibody) at dilution of 1:1000 incubated at room temperature for 1.5 hours.



Immunofluorescent analysis of (4% PFA) fixed U2OS cells using NR2F6 antibody (86371-1-RR, Clone: 251076E2) at dilution of 1:500 and CoraLite® 488-Conjugated Goat Anti-Rabbit IgG(H+L) (SA00013-2), CL594-Phalloidin (red).



Immunofluorescent analysis of (4% PFA) fixed HeLa cells using NR2F6 antibody (86371-1-RR, Clone: 251076E2) at dilution of 1:500 and CoraLite® 488-Conjugated Goat Anti-Rabbit IgG(H+L) (SA00013-2), CL594-Phalloidin (red).