

For Research Use Only

Pan-Keratin (Type II) Recombinant antibody

Catalog Number:86370-1-RR



Basic Information

Catalog Number:

86370-1-RR

Concentration:

1000 μ g/ml

Source:

Rabbit

Isotype:

IgG

GenBank Accession Number:

GeneID (NCBI):

Pan-Keratin (Type II)

UNIPROT ID:

Q14533

Full Name:

Observed MW:

52-68 kDa

Purification Method:

Protein A purification

CloneNo.:

251040F7

Recommended Dilutions:

WB: 1:5000-1:50000

IHC: 1:500-1:2000

IF-P: 1:250-1:1000

Applications

Tested Applications:

WB, IHC, IF-P, ELISA

Species Specificity:

human, mouse, rat

Note-IHC: suggested antigen retrieval with TE buffer pH 9.0; (*) Alternatively, antigen retrieval may be performed with citrate buffer pH 6.0

Positive Controls:

WB : HeLa cells, A431 cells, HT-29 cells, mouse skin tissue, rat colon tissue, rat skin tissue

IHC : human stomach cancer tissue, human breast cancer tissue

IF-P : human colon cancer tissue, human cervical cancer tissue, human lung cancer tissue

Background Information

Keratin is a family of fibrous structural proteins that are key components in hair, nails, feathers, hooves, and the outer layer of skin (epidermis). There are two main types of keratin: Type I (acidic) and Type II (basic/neutral), which form heterodimers to create intermediate filaments, providing mechanical strength to cells. Type II keratins (or Type II cytokeratins) are basic or neutral proteins that form part of the intermediate filament cytoskeleton in epithelial cells. Type II keratins include K1-K8, and K71-K86.

Storage

Storage:

Store at -20°C. Stable for one year after shipment.

Storage Buffer:

PBS with 0.02% sodium azide and 50% glycerol, pH7.3

Aliquoting is unnecessary for -20°C storage

For technical support and original validation data for this product please contact:

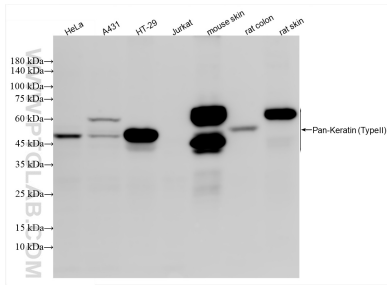
T: 4006900926

E: Proteintech-CN@ptglab.com

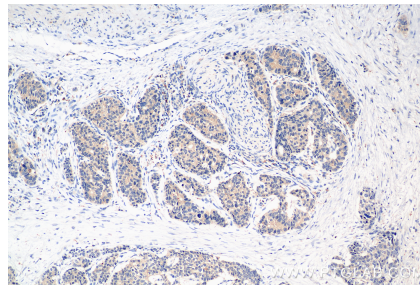
W: ptgcn.com

This product is exclusively available under Proteintech Group brand and is not available to purchase from any other manufacturer.

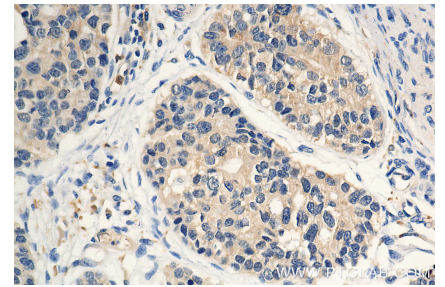
Selected Validation Data



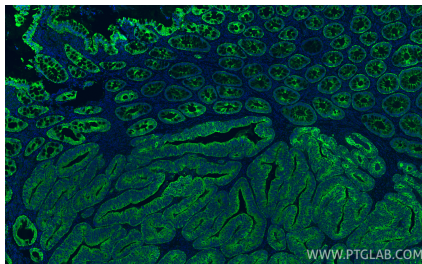
Various lysates were subjected to SDS PAGE followed by western blot with 86370-1-RR (Pan-Keratin (Type II) antibody) at dilution of 1:10000 incubated at room temperature for 1.5 hours.



Immunohistochemical analysis of paraffin-embedded human stomach cancer tissue slide using 86370-1-RR (Pan-Keratin (Type II) antibody) at dilution of 1:1000 (under 10x lens). Heat mediated antigen retrieval with Tris-EDTA buffer (pH 9.0).



Immunohistochemical analysis of paraffin-embedded human stomach cancer tissue slide using 86370-1-RR (Pan-Keratin (Type II) antibody) at dilution of 1:1000 (under 40x lens). Heat mediated antigen retrieval with Tris-EDTA buffer (pH 9.0).



Immunofluorescent analysis of (4% PFA) fixed paraffin-embedded human colon cancer tissue using Pan-Keratin (Type II) antibody (86370-1-RR, Clone: 251040F7) at dilution of 1:500 and CoraLite@488-Conjugated Goat Anti-Rabbit IgG(H+L) (SA00013-2). Heat mediated antigen retrieval with Tris-EDTA buffer (pH 9.0).